

## SafeNet Luna PCIe HSM Client 10.1

### INSTALLATION GUIDE



## Document Information

<b>Product Version</b>	10.1
<b>Document Part Number</b>	007-000555-001
<b>Release Date</b>	23 January 2020

## Revision History

<b>Revision</b>	<b>Date</b>	<b>Reason</b>
Rev. A	23 January 2020	Initial release

## Trademarks, Copyrights, and Third-Party Software

Copyright 2001-2020 Thales. All rights reserved. Thales and the Thales logo are trademarks and service marks of Thales and/or its subsidiaries and are registered in certain countries. All other trademarks and service marks, whether registered or not in specific countries, are the property of their respective owners.

## Disclaimer

All information herein is either public information or is the property of and owned solely by Thales and/or its subsidiaries who shall have and keep the sole right to file patent applications or any other kind of intellectual property protection in connection with such information.

Nothing herein shall be construed as implying or granting to you any rights, by license, grant or otherwise, under any intellectual and/or industrial property rights of or concerning any of Thales's information.

This document can be used for informational, non-commercial, internal, and personal use only provided that:

- > The copyright notice, the confidentiality and proprietary legend and this full warning notice appear in all copies.
- > This document shall not be posted on any publicly accessible network computer or broadcast in any media, and no modification of any part of this document shall be made.

Use for any other purpose is expressly prohibited and may result in severe civil and criminal liabilities.

The information contained in this document is provided "AS IS" without any warranty of any kind. Unless otherwise expressly agreed in writing, Thales makes no warranty as to the value or accuracy of information contained herein.

The document could include technical inaccuracies or typographical errors. Changes are periodically added to the information herein. Furthermore, Thales reserves the right to make any change or improvement in the specifications data, information, and the like described herein, at any time.

Thales hereby disclaims all warranties and conditions with regard to the information contained herein, including all implied warranties of merchantability, fitness for a particular purpose, title and non-infringement. In no event shall Thales be liable, whether in contract, tort or otherwise, for any indirect, special or consequential

damages or any damages whatsoever including but not limited to damages resulting from loss of use, data, profits, revenues, or customers, arising out of or in connection with the use or performance of information contained in this document.

Thales does not and shall not warrant that this product will be resistant to all possible attacks and shall not incur, and disclaims, any liability in this respect. Even if each product is compliant with current security standards in force on the date of their design, security mechanisms' resistance necessarily evolves according to the state of the art in security and notably under the emergence of new attacks. Under no circumstances, shall Thales be held liable for any third party actions and in particular in case of any successful attack against systems or equipment incorporating Thales products. Thales disclaims any liability with respect to security for direct, indirect, incidental or consequential damages that result from any use of its products. It is further stressed that independent testing and verification by the person using the product is particularly encouraged, especially in any application in which defective, incorrect or insecure functioning could result in damage to persons or property, denial of service, or loss of privacy.

All intellectual property is protected by copyright. All trademarks and product names used or referred to are the copyright of their respective owners. No part of this document may be reproduced, stored in a retrieval system or transmitted in any form or by any means, electronic, mechanical, chemical, photocopy, recording or otherwise without the prior written permission of Thales Group.

### **Regulatory Compliance**

This product complies with the following regulatory regulations. To ensure compliancy, ensure that you install the products as specified in the installation instructions and use only Thales-supplied or approved accessories.

#### **USA, FCC**

This equipment has been tested and found to comply with the limits for a “Class B” digital device, pursuant to part 15 of the FCC rules.

#### **Canada**

This class B digital apparatus meets all requirements of the Canadian interference-causing equipment regulations.

#### **Europe**

This product is in conformity with the protection requirements of EC Council Directive 2014/30/EU. This product satisfies the CLASS B limits of EN55032.

# CONTENTS

Preface: About the Installation Guide .....	6
Customer Release Notes .....	6
Audience .....	6
Document Conventions .....	7
Support Contacts .....	9
Chapter 1: Verifying the Integrity of Your Shipment .....	10
Chapter 2: SafeNet Luna PCIe HSM Hardware Installation .....	11
SafeNet Luna PCIe HSM Required Items .....	12
Basic SafeNet Luna PCIe HSM order items .....	12
PED-Authenticated SafeNet Luna PCIe HSM order items .....	13
Optional Items .....	15
Installing the SafeNet Luna PCIe HSM Hardware .....	16
Installing the SafeNet Luna PCIe HSM Card Into the Host Computer .....	16
Connecting a Chassis Intrusion Connector to the Tamper Header .....	18
Connecting a Local PED .....	19
Connecting a Remote PED .....	19
Replacing the SafeNet Luna PCIe HSM Battery .....	20
Required Items .....	20
Instructions .....	21
Prerequisites .....	21
Replacing the SafeNet Luna PCIe HSM Battery .....	21
Chapter 3: SafeNet Luna G7-based Backup HSM Hardware Installation .....	23
SafeNet Luna Backup HSM Received Items .....	23
Installing the SafeNet Luna Backup HSM Hardware .....	25
Chapter 4: SafeNet Luna PED Received Items .....	26
Chapter 5: SafeNet Luna HSM Client Software Installation .....	29
AIX SafeNet Luna HSM Client Installation .....	30
Prerequisites .....	30
Installing the Client Software .....	30
Controlling User Access to Your Attached HSMs and Partitions .....	33
Uninstalling the SafeNet Luna HSM Client Software .....	34
Installing Java .....	34
Scripted or Unattended Installation .....	34
Interrupting the Installation .....	35
After Installation .....	35
Linux SafeNet Luna HSM Client Installation .....	36

---

Installing the Client Software .....	37
Controlling User Access to Your Attached HSMs and Partitions .....	40
Uninstalling the Client Software or Removing Components .....	41
Java .....	42
Scripted or Unattended Installation .....	42
Interrupting the Installation .....	43
Solaris SafeNet Luna HSM Client Installation .....	44
Prerequisites .....	44
Installing the Client Software .....	45
Controlling User Access to Your Attached HSMs and Partitions .....	47
Uninstalling the SafeNet Luna HSM Client Software .....	48
Java .....	48
Scripted or Unattended Installation .....	48
Interrupting the installation - [Ctrl] [C] .....	49
After Installation .....	49
Windows SafeNet Luna HSM Client Installation .....	50
Required Client Software .....	50
Prerequisites .....	50
Installing the SafeNet Luna HSM Client Software .....	50
Modifying the Installed Windows SafeNet Luna HSM Client Software .....	54
Java .....	55
SafeNet CSP and KSP .....	55
USB-powered PED .....	56
Uninstalling the SafeNet Luna HSM Client Software .....	56
After Installation .....	58
Troubleshooting .....	58
Scripted/Unattended Windows Installation/Uninstallation .....	60
Command line options overview .....	60
Installing all components and features .....	62
Installing the SafeNet Luna HSM Client for the SafeNet Luna Network HSM .....	63
Installing the SafeNet Luna HSM Client for the SafeNet Luna PCIe HSM .....	63
Installing the SafeNet Luna HSM Client for the SafeNet Luna USB HSM .....	63
Installing the SafeNet Luna HSM Client for the SafeNet Luna Backup HSM .....	64
Installing the SafeNet Luna HSM Client for Remote PED .....	64
Installation Location .....	64
Logging .....	65
Uninstalling the SafeNet Luna HSM Client .....	65
Adding a DPoD HSM on Demand Service .....	65

# PREFACE: About the Installation Guide

This document describes how to install the SafeNet Luna HSM hardware and the SafeNet Luna HSM Client software. Refer to the following chapters to verify the security and integrity of your new hardware shipment and install the hardware and software components applicable to you:

- > ["Verifying the Integrity of Your Shipment" on page 10](#)
- > ["SafeNet Luna PCIe HSM Hardware Installation" on page 11](#)
- > ["SafeNet Luna PED Received Items" on page 26](#). For instructions on setting up the SafeNet Luna PED, see ["PED Authentication" on page 1](#) in the *Administration Guide*.
- > ["SafeNet Luna HSM Client Software Installation" on page 29](#)

The preface includes the following information about this document:

- > ["Customer Release Notes" below](#)
- > ["Audience" below](#)
- > ["Document Conventions" on the next page](#)
- > ["Support Contacts" on page 9](#)

For information regarding the document status and revision history, see ["Document Information" on page 2](#).

## Customer Release Notes

---

The customer release notes (CRN) provide important information about this release that is not included in the customer documentation. Read the CRN to fully understand the capabilities, limitations, and known issues for this release. You can view or download the latest version of the CRN from the Technical Support Customer Portal at <https://supportportal.gemalto.com>.

## Audience

---

This document is intended for personnel responsible for maintaining your organization's security infrastructure. This includes SafeNet Luna HSM users and security officers, key manager administrators, and network administrators.

All products manufactured and distributed by Thales Group are designed to be installed, operated, and maintained by personnel who have the knowledge, training, and qualifications required to safely perform the tasks assigned to them. The information, processes, and procedures contained in this document are intended for use by trained and qualified personnel only.

It is assumed that the users of this document are proficient with security concepts.

## Document Conventions

This document uses standard conventions for describing the user interface and for alerting you to important information.

### Notes

Notes are used to alert you to important or helpful information. They use the following format:

**NOTE** Take note. Contains important or helpful information.

### Cautions

Cautions are used to alert you to important information that may help prevent unexpected results or data loss. They use the following format:

**CAUTION!** Exercise caution. Contains important information that may help prevent unexpected results or data loss.

### Warnings

Warnings are used to alert you to the potential for catastrophic data loss or personal injury. They use the following format:

**\*\*WARNING\*\*** Be extremely careful and obey all safety and security measures. In this situation you might do something that could result in catastrophic data loss or personal injury.

## Command syntax and typeface conventions

Format	Convention
<b>bold</b>	<p>The bold attribute is used to indicate the following:</p> <ul style="list-style-type: none"> <li>&gt; Command-line commands and options (Type <b>dir /p</b>.)</li> <li>&gt; Button names (Click <b>Save As</b>.)</li> <li>&gt; Check box and radio button names (Select the <b>Print Duplex</b> check box.)</li> <li>&gt; Dialog box titles (On the <b>Protect Document</b> dialog box, click <b>Yes</b>.)</li> <li>&gt; Field names (<b>User Name</b>: Enter the name of the user.)</li> <li>&gt; Menu names (On the <b>File</b> menu, click <b>Save</b>.) (Click <b>Menu &gt; Go To &gt; Folders</b>.)</li> <li>&gt; User input (In the <b>Date</b> box, type <b>April 1</b>.)</li> </ul>
<i>italics</i>	<p>In type, the italic attribute is used for emphasis or to indicate a related document. (See the <i>Installation Guide</i> for more information.)</p>

Format	Convention
<variable>	In command descriptions, angle brackets represent variables. You must substitute a value for command line arguments that are enclosed in angle brackets.
[ <b>optional</b> ] [<optional>]	Represent optional <b>keywords</b> or <variables> in a command line description. Optionally enter the keyword or <variable> that is enclosed in square brackets, if it is necessary or desirable to complete the task.
{ <b>a b c</b> } {<a> <b> <c>}	Represent required alternate <b>keywords</b> or <variables> in a command line description. You must choose one command line argument enclosed within the braces. Choices are separated by vertical (OR) bars.
[ <b>a b c</b> ] [<a> <b> <c>]	Represent optional alternate keywords or variables in a command line description. Choose one command line argument enclosed within the braces, if desired. Choices are separated by vertical (OR) bars.

## Support Contacts

---

If you encounter a problem while installing, registering, or operating this product, please refer to the documentation before contacting support. If you cannot resolve the issue, contact your supplier or [Thales Customer Support](#).

Thales Customer Support operates 24 hours a day, 7 days a week. Your level of access to this service is governed by the support plan arrangements made between Thales and your organization. Please consult this support plan for further information about your entitlements, including the hours when telephone support is available to you.

### Customer Support Portal

The Customer Support Portal, at <https://supportportal.gemalto.com>, is where you can find solutions for most common problems. The Customer Support Portal is a comprehensive, fully searchable database of support resources, including software and firmware downloads, release notes listing known problems and workarounds, a knowledge base, FAQs, product documentation, technical notes, and more. You can also use the portal to create and manage support cases.

**NOTE** You require an account to access the Customer Support Portal. To create a new account, go to the portal and click on the **REGISTER** link.

### Telephone


The support portal also lists telephone numbers for voice contact. ( [KB0013367](#) )

### Email Support

You can also contact technical support by email at [technical.support@gemalto.com](mailto:technical.support@gemalto.com).

# CHAPTER 1: Verifying the Integrity of Your Shipment

**CAUTION!** Gemalto employs a number of security measures to allow you to verify that your new hardware was not intercepted in transit or otherwise tampered with before you received it. To verify the authenticity and handling history of your received items, review the following checklist before you unpack your new hardware, and then follow the checklist as you unpack each received item.

Step	Yes	No
1. Do the items received (individual items, part numbers) match those listed in the enclosed packing list? If yes, go to the next step. If no, contact Thales support.		
2. Before you received the product, did you receive an advanced shipping notification providing details regarding the shipment (part numbers and serial numbers for the product and tamper-evident bags)? If yes, go to the next step. If no, contact Thales support.		
3. Are all of the tamper-evident bag serial numbers and tamper-evident label serial numbers listed in the advanced shipping notification present, and do they match the actual tamper-evident bag/label serial numbers received? If yes, go to the next step. If no, contact Thales support.		
4. Did you receive any tamper-evident bag/label serial numbers that are not listed on the advance shipping notification? If yes, contact Thales support. If no, go to the next step.		
5. Are there any signs of physical tampering? If tamper-evident labels are affixed to the received product, have any of these labels been damaged? Have the tamper evident bags been damaged in any way? The tamper seals on the sides indicate tampering if they show the <b>ALERT</b> markings as illustrated below. If yes, contact Thales support. If no, go to the next step.		
		
6. Once you have verified all of the received items, you can proceed with the installation.		

# CHAPTER 2: SafeNet Luna PCIe HSM Hardware Installation

This chapter describes how to install and connect a SafeNet Luna PCIe HSM. To ensure a successful installation, perform the following tasks in the order indicated:

1. Before unpacking your new hardware, refer to ["Verifying the Integrity of Your Shipment" on page 10](#) for safe unpacking instructions.
2. Ensure that you have all of the required components, as listed in ["SafeNet Luna PCIe HSM Required Items" on the next page](#)
3. Install and connect the hardware, as described in ["Installing the SafeNet Luna PCIe HSM Hardware" on page 16](#)
4. The SafeNet Luna PCIe HSM uses a 3.6V non-rechargeable lithium battery to provide backup power to its memory. If you need to replace this battery, see ["Replacing the SafeNet Luna PCIe HSM Battery" on page 20](#).

**CAUTION!** This product uses semiconductors that can be damaged by electro-static discharge (ESD). When handling the device, avoid contact with exposed components, and always use an anti-static wrist strap connected to an earth ground. In rare cases, ESD can trigger a tamper or decommission event on the HSM. If this happens, all existing roles and cryptographic objects are deleted.

The SafeNet Luna PCIe HSM has been tested with a variety of representative systems/servers with compliant PCI express slots. When a compatibility problem with a current brand and model computer arises, that information is made available via the Thales Support Portal.

If you encounter any issues when installing the SafeNet Luna PCIe HSM into a new server/host computer, first try a different PCI express slot. The design of certain motherboards or the associated BIOS may prevent proper communication with a SafeNet Luna PCIe HSM. For example, certain PCI express physical slots are intended for use only with a video card or another specific type of hardware, and the SafeNet Luna PCIe HSM may not work correctly in these slots.



If you encounter further issues, please contact Thales Group Technical Support.

## SafeNet Luna PCIe HSM Required Items

This section provides a list of the components you should have received with your SafeNet Luna PCIe HSM order. The specific items you received depend on whether you ordered a password-authenticated or a PED-authenticated SafeNet Luna PCIe HSM, and whether your order included a backup device or other options as described below.

### Basic SafeNet Luna PCIe HSM order items


The standard items that you should have received as your basic order for a SafeNet Luna PCIe HSM are:



Qty	Item
1	<p data-bbox="225 653 528 680"><b>SafeNet Luna PCIe HSM</b></p>  <p data-bbox="225 1045 887 1073">The HSM comes fitted with a full-height mounting bracket.</p>
1	<p data-bbox="225 1115 504 1142"><b>Anti-Static Wrist Strap</b></p>  <p data-bbox="225 1199 453 1640">The image shows the packaging for a 3M 2209 Disposable Wrist Strap. The packaging is a clear plastic bag with a white label that includes the product name, a diagram of the strap being used, and instructions. The instructions are as follows:</p> <ol data-bbox="264 1486 421 1570" style="list-style-type: none"> <li>1. Unwrap 12" (30 cm) of the band and wrap adhesive side around your wrist.</li> <li>2. Unroll rest of band and remove liner from zipper tape.</li> <li>3. Attach the zipper tape to electrical ground or the metal frame of equipment you are servicing.</li> </ol> <p data-bbox="488 1335 724 1444">Next to the packaging is a photograph of the wrist strap itself, which is a black fabric band with a white zipper tape and a metal contact point.</p>

Qty	Item
1	<b>Half-height mounting bracket</b>  <p>Use this bracket if you need to install the SafeNet Luna PCIe HSM into a half-height slot.</p>

## PED-Authenticated SafeNet Luna PCIe HSM order items

If you ordered a PED-authenticated SafeNet Luna PCIe HSM, you should have received some combination of the following items in addition to the items in the basic order.

Qty	Item
1+	<b>SafeNet Luna PED</b>  <p>Your order should include at least one PED device.</p> <p>If you intend to back up your SafeNet Luna PCIe HSM to a SafeNet Luna Backup HSM, then you require a Luna PED to connect to that Backup HSM.</p> <p>If you intend to combine remote operation and backup, you might prefer to have a second PED. It is possible to use a single Luna PED for both connections, and to simply change between local and remote mode as needed.</p> <p>Note that you can use PED keys that you already own and use with other HSMs if appropriate. You should purchase the number you need for your own convenient operation, and for backup/standby units as your security policies might require.</p>

Qty	Item
1	<p data-bbox="225 268 427 296"><b>Luna PED cable</b></p>  <p data-bbox="225 772 1417 835">Both the standard and remote-capable PED devices connect to your HSM using a Type A to Mini B USB cable.</p>
1	<p data-bbox="225 877 751 905"><b>SafeNet Remote PED Power Supply Kit [*]</b></p>  <p data-bbox="225 1381 1445 1476">If you ordered a Luna PED, your order should include a Luna PED power supply kit with the appropriate connection for your region. The power supply is auto-sensing and includes replaceable mains plug modules for international use.</p> <p data-bbox="225 1482 1445 1545">[* If you received a refreshed PED (updated internal hardware, and PED firmware 2.8.0 or newer), it is powered via the USB connection and does not require a separate, external power supply; none is supplied.]</p>

Qty	Item
1	<p data-bbox="225 268 1038 300"><b>Ten-pack of iKey 1000 PED keys, and sheets of peel-and-stick labels</b></p> <div data-bbox="245 323 1010 680"> </div> <p data-bbox="225 716 1086 747">Your order should include a set of iKey PED keys and peel-and-stick labels.</p>

## Optional Items

Your order may include a SafeNet Luna Backup HSM.

Qty	Item
1	<p data-bbox="225 1008 563 1039"><b>SafeNet Luna Backup HSM</b></p> <div data-bbox="225 1045 823 1234"> </div> <p data-bbox="225 1251 1442 1381">You can back up your selected SafeNet Luna PCIe HSM partition contents (root keys, certificates, other items) to a SafeNet Luna Backup HSM. The SafeNet Luna Backup HSM is suitable for off-site storage and for backing up multiple HSM partitions. It can back up contents of password-authenticated or of PED-authenticated HSMs. It must be initialized as one type or the other before the backup operation starts.</p> <p data-bbox="225 1392 1442 1455">The SafeNet Luna Backup HSM can be connected directly to an HSM, or it can be connected to a separate computer to back up remotely-located HSMs in conjunction with a Remote PED.</p> <p data-bbox="225 1465 1458 1528">The authentication method for a Backup HSM must match the authentication method (password or PED) for any HSM with which it is used.</p> <p data-bbox="225 1539 1015 1570">The SafeNet Luna Backup HSM ships with an external power supply.</p>

## Installing the SafeNet Luna PCIe HSM Hardware

This section describes how to perform the following tasks:

- > Install the SafeNet Luna PCIe HSM card into the host computer. See "[Installing the SafeNet Luna PCIe HSM Card Into the Host Computer](#)" below.
- > Connect a chassis intrusion connector to the tamper header on the card, if necessary. See "[Connecting a Chassis Intrusion Connector to the Tamper Header](#)" on page 18
- > Connect a local PED, if necessary. See "[Connecting a Local PED](#)" on page 19
- > Connect a remote PED, if necessary. See "[Connecting a Remote PED](#)" on page 19

### Installing the SafeNet Luna PCIe HSM Card Into the Host Computer

Install the SafeNet Luna PCIe HSM card into an open PCIe slot on the host computer.

**CAUTION!** This product uses semiconductors that can be damaged by electro-static discharge (ESD). When handling the device, avoid contact with exposed components, and always use an anti-static wrist strap connected to an earth ground. In rare cases, ESD can trigger a tamper or decommission event on the HSM. If this happens, all existing roles and cryptographic objects are deleted.

#### Prerequisites

- > Ensure that the PCIe slot is unpowered before you proceed with the installation.

#### To install the SafeNet Luna PCIe HSM hardware

1. Open your computer, and remove the slot-cover bracket from an available PCIe slot. If the bracket is secured by a screw, keep that screw.
2. Use the provided anti-static wrist-strap to ground yourself to an exposed metal part of the computer chassis.
3. Remove the SafeNet Luna PCIe HSM from its anti-static packaging and prepare to insert the card into your computer.

Your SafeNet Luna PCIe HSM comes fitted with a full-height mounting bracket, but if you have no full-height slots available, the card can fit into a half-height slot. A half-height mounting bracket is included for this purpose. To install the half-height bracket, remove the two screws connecting the full-height bracket to the card, and use them to mount the half-height bracket in its place.

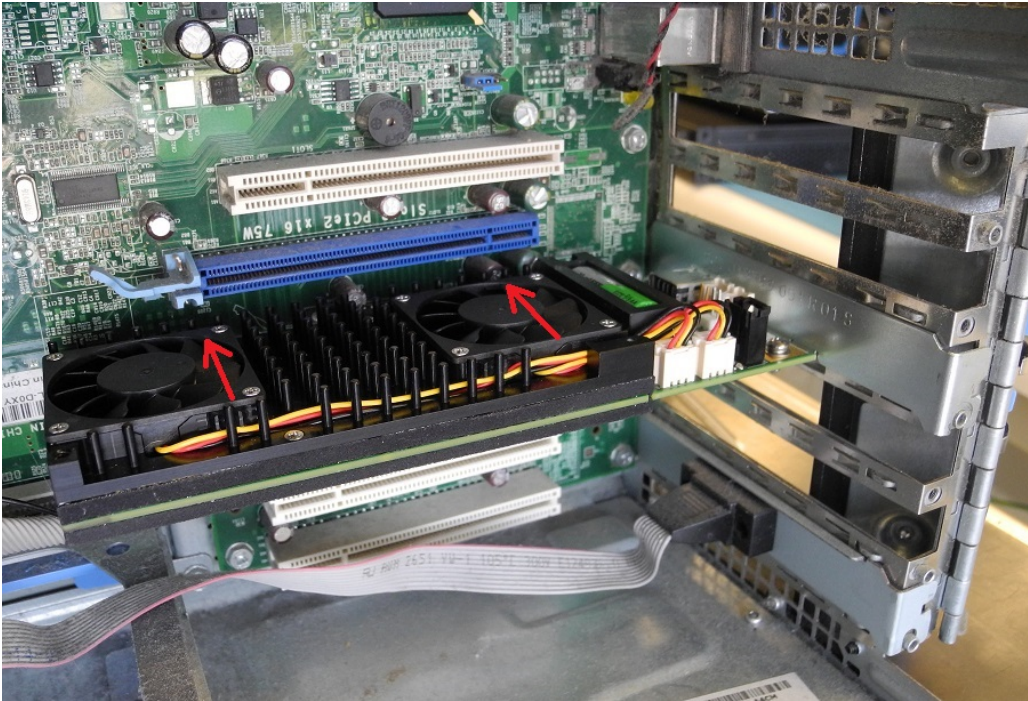


4. Align the SafeNet Luna PCIe HSM card with the vacant, unpowered slot. You might need to introduce the tip of the card-hold-down bracket first (the silver-metal part along the back edge of the card), in order to properly align the card with the connector.

You can use a PCIe X4 or larger slot, as long as it is wired for at least four PCI express channels, and not reserved for a dedicated function. For example, we do not recommend that you use your SafeNet Luna PCIe HSM card in a designated PCI express video slot - different models of computer and their BIOS firmware can differ in how faithfully they support the PCIe standard.



5. Insert the SafeNet Luna PCIe HSM card into the connector. It should go straight in – angling the card might cause it to bend. The card is properly seated when no portion of the gold-colored contacts of the card-edge protrudes above the connector socket.



6. Secure the card hold-down bracket with a screw or other restraint, as appropriate in your computer.

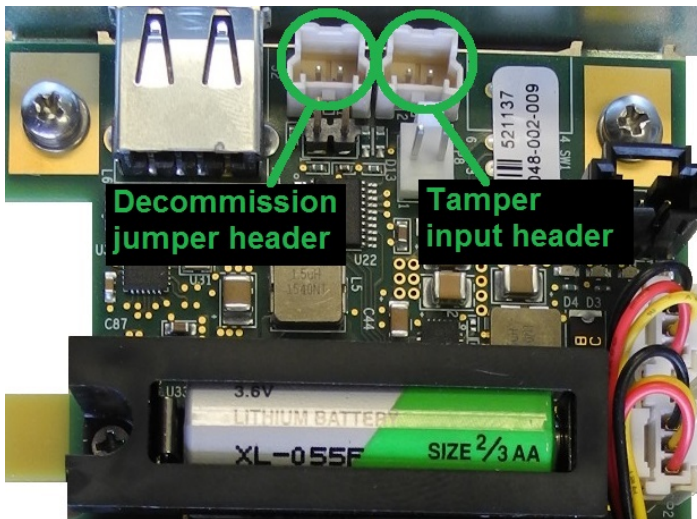
## Connecting a Chassis Intrusion Connector to the Tamper Header

The SafeNet Luna PCIe HSM is equipped with a two-pin tamper header which, when shorted, places the HSM in a tamper state with a status of Chassis Open. If your chassis is so equipped, you can connect the chassis intrusion connector to the tamper header so that the HSM is placed in a tamper state if the chassis is opened. Refer to the documentation provided by your chassis manufacturer for more information.

### To connect a chassis intrusion connector to the tamper header

1. Install the card as described in "[Installing the SafeNet Luna PCIe HSM Card Into the Host Computer](#)" on [page 16](#).
2. Connect the chassis intrusion connector to the tamper input header on the card, shown below.

**NOTE** If used, this pin pair would usually be wired to a chassis switch that is held open when the lid or panel is in place. Opening the lid or panel would allow the switch to close, and tamper the HSM. If you are constructing or ordering a cable for this purpose, the header has 2mm pin pitch and mates with a Molex connector ([https://www.molex.com/molex/products/datasheet.jsp?part=active/0355070200\\_CRIMP\\_HOUSINGS.xml](https://www.molex.com/molex/products/datasheet.jsp?part=active/0355070200_CRIMP_HOUSINGS.xml)) or equivalent.



## Connecting a Local PED

The local Luna PED (or a Luna PED Remote used locally) connects directly to the USB port on the SafeNet Luna PCIe HSM card via a USB-to-MiniUSB cable.

### To connect a local PED to the SafeNet Luna PCIe HSM:

1. Use the Luna PED local cable (mini-USB to USB) to connect the Luna PED to the SafeNet Luna PCIe HSM card:
  - a. Plug the mini-USB connector on the cable into the mini-USB port on the PED.
  - b. Plug the USB connector on the cable into the USB port on the card.

## Connecting a Remote PED

The Remote-Capable PED can be used either locally, connected directly to a SafeNet Luna HSM (exactly as for the standard PED), or remotely when connected to a suitable workstation and to the electrical main power supply. The normal local use of a PED with Remote PED capability is to use it in local mode to prepare an HSM (imprint an RPK – the orange key with a Remote PED Vector) before shipping it to its remote location. Then you would switch to Remote PED mode.

To prepare an HSM for Remote PED operation you need to connect it locally and imprint the HSM with a Remote PED key (orange). Once the HSM can be reached via remote desktop connection, and the HSM is associated with an orange PED key, all further configuration and administration can be performed remotely.

### To connect a remote PED to the SafeNet Luna PCIe HSM:

1. Use the Luna PED local cable to connect the Luna PED to the SafeNet Luna PCIe HSM card. This step is required to imprint the HSM with a Remote PED Vector (RPV) using the orange PED key (RPK). This should be the only time you need to connect a PED locally to the HSM. Once the orange PED key is imprinted with the same RPV as the HSM, all future PED operations can be performed remotely.
2. Follow the instructions in the *Administration Guide* to configure the remote PED. Note that you must install at least the Remote PED optional component of the SafeNet Luna HSM Client software before you can configure the remote PED. See ["SafeNet Luna HSM Client Software Installation" on page 29](#).


## Replacing the SafeNet Luna PCIe HSM Battery

The SafeNet Luna PCIe HSM uses a 3.6V non-rechargeable lithium battery to provide backup power to its memory. This enables the HSM to preserve cryptographic material even when the host system loses power. The battery may need replacement over the course of the HSM's lifetime. To see if your battery needs to be replaced, run **hsm envshow** in LunaCM. A warning is returned if the battery's voltage drops below 2.75 V.

**CAUTION!** Unless temporary battery power is supplied to the HSM while the main battery is replaced, all cryptographic material will be erased. Use the SafeNet Luna PCIe HSM Temporary Battery Holder to ensure a continuous power supply.

## Required Items

To replace the battery, you will need the following items. Battery manufacturer information is suggested.

Qty	Item	Description/Specifications	Manufacturer	Part Number
1	SafeNet Luna PCIe HSM replacement battery	2/3AA, 3.6V, 1650 mAh, Li-COCl <sub>2</sub> , length 33.5 mm, diameter 14.55 mm	OmniCel	ER14335/S
			Xeno Energy	XL-055F
1	Temporary Battery Holder	Used with a temporary battery to maintain power to the SafeNet Luna PCIe HSM during the replacement process. Can be requested from Thales Group. 	Thales Group	908-000408-001
1	Temporary Battery	AA, 3.6V, 1650 mAh, Li-COCl <sub>2</sub> , length 50.3 mm, diameter 14.55 mm	Saft	LS14500-AA

## Instructions

**CAUTION!** Back up any important cryptographic material on the HSM before proceeding. Removing the card from the host system will cause a tamper event. If **HSM policy 40: Decommission on Tamper** is enabled, the application partition and all roles are destroyed, and you must reconfigure the HSM after this procedure.

### Prerequisites

To replace the battery, you must first remove the SafeNet Luna PCIe HSM card from the host system.

**CAUTION!** This product uses semiconductors that can be damaged by electro-static discharge (ESD). When handling the device, avoid contact with exposed components, and always use an anti-static wrist strap connected to an earth ground. In rare cases, ESD can trigger a tamper or decommission event on the HSM. If this happens, all existing roles and cryptographic objects are deleted.

1. Test the temporary and replacement batteries with a voltmeter or multimeter. If either battery's voltage is below 3.1 V, it is depleted and must be replaced.

**CAUTION!** You must use the temporary battery specified in "[Required Items](#)" on the [previous page](#). Standard AA voltage is too low to power the SafeNet Luna PCIe HSM.

2. [Optional] If the card will not be in your possession the entire time it is out of service, you can enable Secure Transport Mode (see "[Secure Transport Mode](#)" on [page 1](#)). This allows you to know if the card has been tampered with while it was out of your possession.
3. Power off the host machine and disconnect it from power.
4. Use an anti-static wrist strap (provided with your SafeNet Luna PCIe HSM) to ground yourself to an exposed metal part of the computer chassis.
5. Remove the SafeNet Luna PCIe HSM from its PCIe slot.

### Replacing the SafeNet Luna PCIe HSM Battery

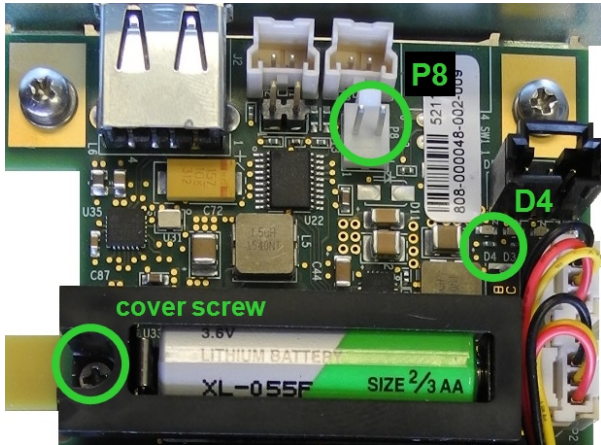
To maintain HSM power, you must connect a temporary battery while replacing the main battery.

#### To replace the SafeNet Luna PCIe HSM battery:

1. Install the temporary battery in the temporary battery replacement holder.
2. Install the 2-pin plug from the battery holder onto the 2-pin header marked **P8** on the SafeNet Luna PCIe HSM card.

**NOTE** The polarity on the **P8** header is not reversible. The jumper will only fit onto the header in the correct direction.

The SafeNet Luna PCIe HSM card's green **D4** LED is illuminated. This indicates that the card is receiving power from the temporary battery. If the LED appears dim, ensure that the temporary battery's voltage is greater than 3.1 V.



3. If necessary, remove the screw securing the battery cover.
4. Replace the 2/3AA battery on the card. Note the correct polarity.
5. Replace the battery cover and secure it with the screw.
6. Remove the jumper from the **P8** header to disconnect the temporary power.
7. Reinstall the SafeNet Luna PCIe HSM card.
8. Dispose of the depleted battery according to regional recycling regulations.

# CHAPTER 3: SafeNet Luna G7-based Backup HSM Hardware Installation

The following topics describe how to install and connect a G7-based SafeNet Luna Backup HSM. To ensure a successful installation, perform the following tasks in the order indicated:

1. Ensure that you have all of the required components, as listed in ["SafeNet Luna Backup HSM Received Items" below](#)
2. Install and connect the hardware, as described in ["Installing the SafeNet Luna Backup HSM Hardware" on page 25](#)

**CAUTION!** To ensure the security and integrity of your new device, refer to ["Verifying the Integrity of Your Shipment" on page 10](#) before unpacking your new SafeNet Luna Backup HSM.

The G7-based SafeNet Luna Backup HSM complies with the following:

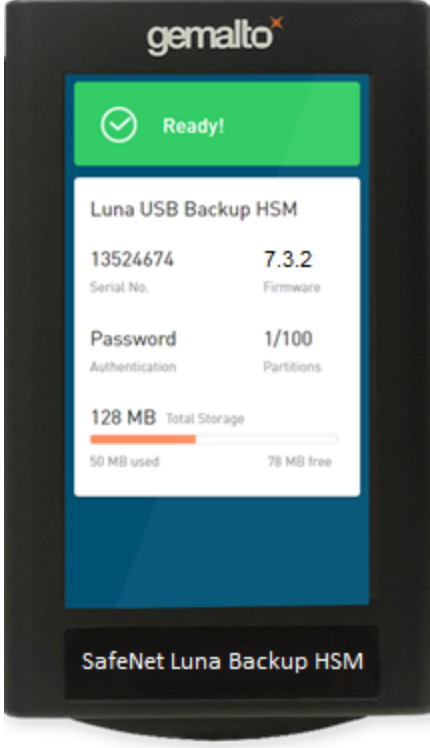




## SafeNet Luna Backup HSM Received Items

This section provides a list of the components you should have received with your order.

### Included Items

The following items are included with your new backup HSM.

Quantity	Item
1	<p><b>SafeNet Luna Backup HSM</b></p> 
1	<p><b>USB 3.0 Cable: Type A to Type C</b></p> 

Quantity	Item
1	<p><b>5V Power Supply</b> with replaceable plug modules for international use.</p> <div data-bbox="319 310 1433 470" style="border: 1px solid gray; padding: 5px;"> <p><b>NOTE</b> On most workstations, the USB connection provides adequate power to the backup HSM. If you are using a low-power workstation, such as a netbook, the USB connection may not provide adequate power, in which case you will also need to connect the external power supply.</p> </div> 

## Installing the SafeNet Luna Backup HSM Hardware

The backup HSM is a USB device. To install the backup HSM, connect it to a SafeNet Luna HSM Client workstation using the included USB cable. The workstation must be running SafeNet Luna HSM Client software that supports the backup HSM and provides the required drivers. Refer to the release notes and see "[Backing Up Partition Objects to a G7 Backup HSM](#)" on page 1 in the *Administration Guide* for more information.


**NOTE** On most workstations, the USB connection provides adequate power to the Backup HSM and it will begin the boot sequence. If you are using a low-power workstation, such as a netbook, the USB connection may not provide adequate power, in which case you will also need to connect the external power supply.

# CHAPTER 4: SafeNet Luna PED Received Items

This chapter describes the items you received with your SafeNet Luna PED device. For instructions on setting up the PED, see "[PED Authentication](#)" on [page 1](#) in the *Administration Guide*.

## Required Items

The following items are included with your PED. All are required for a successful installation.

Qty	Item
1	<b>SafeNet Luna PED</b> (with firmware 2.7.1 or newer) 

Qty	Item
1	<p data-bbox="212 268 1474 331"><b>PED Power Supply</b> kit with replaceable mains plug modules for international use (employed when the PED is operated in Remote PED mode)</p> <p data-bbox="212 373 1426 436"><b>NOTE:</b> If your PED has firmware 2.8.0 or newer, it contains refreshed internal hardware and is powered by USB connection. Refreshed PEDs are not shipped with the external power supply, as they do not need it.</p> 
1	<p data-bbox="212 974 1110 1008"><b>Cable, USB 2.0, Type A to Mini B connectors</b> (for Remote PED operation).</p> 

Qty	Item
1	<p><b>Cable, Data, 9-pin, Micro-D to Micro-D connectors</b> (for local PED operation prior to HSM firmware versions 7.x.).</p> 
1	<p><b>Ten-pack of iKey 1000 PED keys, and sheets of peel-and-stick labels</b></p> 

# CHAPTER 5: SafeNet Luna HSM Client Software Installation

This chapter describes how to install the SafeNet Luna HSM Client software. After installing the hardware, you need to install the SafeNet Luna HSM Client software before you can begin configuring your SafeNet Luna HSM(s).

You can install the client for all SafeNet General Purpose HSMs, or for a specific type (Network or PCIe). Install the client as follows:

- > For SafeNet Luna Network HSM, install the SafeNet Luna HSM Client on any computer that must connect to the appliance as a client.
- > For SafeNet Luna PCIe HSM, install the SafeNet Luna HSM Client on the workstation into which the SafeNet Luna PCIe HSM is installed.
- > For SafeNet Luna USB HSM, install the SafeNet Luna HSM Client on the workstation to which the SafeNet Luna USB HSM is connected.
- > Install the SafeNet Luna HSM Client on any computer that is to have a SafeNet Remote PED connected.

Choose the instructions for your operating system:

- > For AIX, see ["AIX SafeNet Luna HSM Client Installation" on the next page](#).
- > For Linux, see ["Linux SafeNet Luna HSM Client Installation" on page 36](#)
- > For Solaris, see ["Solaris SafeNet Luna HSM Client Installation" on page 44](#)
- > For Windows, see ["Windows SafeNet Luna HSM Client Installation" on page 50](#) The following supplemental topic also applies to Windows:
  - ["Scripted/Unattended Windows Installation/Uninstallation" on page 60](#)
- > ["Adding a DPoD HSM on Demand Service" on page 65](#)

**NOTE** Not all operating systems are supported for each SafeNet Luna HSM type. Refer to the Customer Release Notes (see ["Customer Release Notes" on page 6](#)) for the most current information on supported platforms.

## AIX SafeNet Luna HSM Client Installation

These instructions assume that you have already acquired the SafeNet Luna HSM Client software, usually in the form of a downloaded .tar archive.

You must install the SafeNet Luna HSM Client software on each client workstation you will use to access a SafeNet Luna HSM. This section describes how to install the client on a workstation running AIX, and contains the following topics:

- > ["Prerequisites" below](#)
- > ["Installing the Client Software" below](#)
- > ["Controlling User Access to Your Attached HSMs and Partitions" on page 33](#)
- > ["Uninstalling the SafeNet Luna HSM Client Software" on page 34](#)
- > ["Installing Java" on page 34](#)
- > ["Scripted or Unattended Installation" on page 34](#)
- > ["Interrupting the Installation" on page 35](#)

Applicability to specific versions of AIX is summarized in the Customer Release Notes for the current release.

**NOTE** Before installing a SafeNet system, you should confirm that the product you have received is in factory condition and has not been tampered with in transit. Refer to the Content Sheet included with your product shipment. If you have any questions about the condition of the product that you have received, please contact Thales Group Technical Support.

### Prerequisites

Each computer that connects to the SafeNet Luna HSM appliance as a Client must have the cryptoki library, the vtl client shell and other utilities and supporting files installed. Each computer that contains, or is connected to a SafeNet Luna PCIe HSM or a SafeNet Luna Remote Backup HSM must have the cryptoki library and other utilities and supporting files installed.

### Installing the Client Software

Check the SafeNet Luna HSM Customer Release Notes for any installation-related issues or instructions before you begin the following software installation process.

#### To install the SafeNet Luna HSM Client software on AIX:

1. Log on to the client system, open a console or terminal window, and use **su** or **sudo** to gain administrative permissions for the installation.
2. If you downloaded the software, copy or move the .tar archive (which usually has a name like "LunaClient\_7.x.y-nn\_AIX.tar") to a suitable directory where you can untar the archive and launch the installation script.
3. Enter the following command to extract the contents from the archive:  
**tar xvf <filename>.tar**
4. Change directory to the software version suitable for your system.
5. Install the client software as follows:

- To see the 'help', or a list of available installer options, type:  
**sh install.sh -?** or **./sh install.sh --help**
- To install all available products and optional components, type:  
**sh install.sh all**
- To selectively install individual products and optional components, type the command without arguments:  
**sh install.sh**

**NOTE** Do not interrupt the installation script in progress. An uninterruptible power supply (UPS) is recommended. See ["Interrupting the Installation" on page 35](#) for more information.

**6. Type **y** if you agree to be bound by the license agreement:**

```
[mylunaclient-1 32]$ sh install.sh
```

```
IMPORTANT: The terms and conditions of use outlined in the software
license agreement (Document #008-010005-001_EULA_HSM_SW_revN) shipped with the product
("License") constitute a legal agreement between you and SafeNet.
Please read the License contained in the packaging of this
product in its entirety before installing this product.
```

```
Do you agree to the License contained in the product packaging?
```

```
If you select 'yes' or 'y' you agree to be bound by all the terms
and conditions set out in the License.
```

```
If you select 'no' or 'n', this product will not be installed.
```

```
(y/n)
```

**7. A list of installable SafeNet products appears (might be different, depending on your platform). Select as many as you require, by typing the number of each (in any order) and pressing Enter. As each item is selected, the list updates, with a "\*" in front of any item that has been selected. This example shows item 1 has been selected.**

```
Products
```

```
Choose Luna Products to be installed
```

```
*[1]: Luna Network HSM
[N|n]: Next
[Q|q]: Quit
```

```
Enter selection: 1
```

**NOTE** When the above was captured, the AIX client supported only SafeNet Luna Network HSM. To install the SafeNet Luna Backup HSM, you will need one of the other supported host platforms.

**8. When selection is complete, type **N** or **n** for "Next", and press **Enter**. If you wish to make a change, simply type a number again and press **Enter** to de-select a single item.**

9. The next list is called "Advanced" and includes additional items to install. Some items might be pre-selected to provide the optimum SafeNet Luna HSM experience for the majority of customers, but you can change any selection in the list.

Products

Choose Luna Products to be installed

[1]: Luna Network HSM

[N|n]: Next

[Q|q]: Quit

Enter selection: 1

Advanced

Choose Luna Components to be installed

[1]: Luna SDK

\*[2]: Luna JSP (Java)

\*[3]: Luna JCProv (Java)

[B|b]: Back to Products selection

[I|i]: Install

[Q|q]: Quit

Enter selection:

If you wish to make a change, simply type a number again and press **Enter** to select or de-select a single item.

If the script detects an existing cryptoki library, it stops and suggests that you uninstall your previous SafeNet software before starting the SafeNet Luna HSM Client installation again.

10. The system installs all packages related to the products and any optional components that you selected. By default, the Client programs are installed in the **/usr/safenet/lunaclient** directory.

**NOTE** When installing, ensure that the full path of a package does not contain any space characters. (The IBM examples do not show any spaces, implying that this might be a system requirement.)

11. Although FMs are supported on Linux and Windows clients only in this release, the FM architecture requires a configuration file setting to allow partition login on an FM-enabled HSM. If the HSM you will be using with this client is FM-enabled (see "[Preparing the SafeNet Luna PCIe HSM to Use FMs](#)" on page 1 for more information), you must add the following entry to the [Misc] section of the Chrystoki.conf file:

**[Misc]**

**LoginAllowedOnFMEnabledHSMs=1**

**NOTE** As a general rule, do not modify the `Chrystoki.conf/crystoki.ini` file, unless directed to do so by Gemalto Technical Support. If you do modify the file, never insert TAB characters - use individual space characters. Avoid modifying the PED timeout settings. These are now hardcoded in the appliance, but the numbers in the `Chrystoki.conf` file must match.

## Controlling User Access to Your Attached HSMs and Partitions

By default, only the root user has access to your attached HSMs and partitions. You can specify a set of non-root users that are permitted to access your attached HSMs and partitions, by adding them to the **hsmusers** group.

**NOTE** The client software installation automatically creates the `hsmusers` group if one does not already exist on your system. The `hsmusers` group is retained when you uninstall the client software, allowing you to upgrade your client software while retaining your `hsmusers` group configuration.

### Adding users to hsmusers group

To allow non-root users or applications access your attached HSMs and partitions, assign the users to the **hsmusers** group. The users you assign to the `hsmusers` group must exist on the client workstation. Users you add to the `hsmusers` group are able to access your attached HSMs and partitions. Users who are not part of the `hsmusers` group are not able to access your attached HSMs and partitions.

#### To add a user to hsmusers group

1. Ensure that you have **sudo** privileges on the client workstation.
2. Add a user to the `hsmusers` group:

```
sudo gpasswd --add <username> hsmusers
```

where `<username>` is the name of the user you want to add to the `hsmusers` group.

### Removing users from hsmusers group

Should you wish to rescind a user's access to your attached HSMs and partitions, you can remove them from the `hsmusers` group.

**NOTE** The user you delete will continue to have access to the HSM until you reboot the client workstation.

#### To remove a user from hsmusers group

1. Ensure that you have **sudo** privileges on the client workstation.
2. Remove a user from the `hsmusers` group:

```
sudo gpasswd -d <username> hsmusers
```

where `<username>` is the name of the user you want to remove from the `hsmusers` group. You must log in again to see the change.

## Uninstalling the SafeNet Luna HSM Client Software

You may need to uninstall the SafeNet Luna HSM Client software prior to upgrading to a new release, or if the software is no longer required.

### To uninstall the SafeNet Luna HSM Client software:

1. Log in as root. (use sudo instead)
2. Go to the client installation directory:  
**cd /usr/safenet/lunaclient/bin**
3. Run the uninstall script:  
**sudo sh uninstall.sh**

## Installing Java

If you install the Luna Java Security Provider (JSP), refer to [SafeNet JSP Overview and Installation](#) for additional setup procedures for your operating system.

## Scripted or Unattended Installation

If you prefer to run the installation from a script, rather than interactively, run the command with the options **-p** <list of SafeNet products> and **-c** <list of SafeNet components>. To see the syntax, run the command with **help** like this:

```
[myhost]$ sudo sh install.sh help
[sudo] password for fred
```

At least one product should be specified.

usage:

```
install.sh      - Luna Client install through menu
install.sh help - Display scriptable install options
install.sh all  - Complete Luna Client install

install.sh -p [sa|pci|g5|rb] [-c sdk|jsp|jcprov|ldpc|snmp]

-p <list of Luna products>
-c <list of Luna components> - Optional. All components are installed if not provided
```

Luna products options

```
sa      - SafeNet Luna Network HSM
pci     - SafeNet Luna PCIe HSM
g5      - SafeNet Luna USB HSM
rb      - SafeNet Luna Backup HSM
```

Luna components options

```
sdk     - Luna SDK
jsp     - Luna JSP (Java)
jcprov  - Luna JC PROV (Java)
snmp    - Luna SNMP subagent
```

```
[myhost]$
```

For scripted/automated installation, your script will need to capture and respond to the License Agreement prompt, and to the confirmation prompt. For example:

```
[myhost]$ sudo sh install.sh all
```

```
IMPORTANT: The terms and conditions of use outlined in the software
license agreement (Document #008-010005-001_053110) shipped with the product
("License") constitute a legal agreement between you and SafeNet Inc.
Please read the License contained in the packaging of this
product in its entirety before installing this product.
```

```
Do you agree to the License contained in the product packaging?
```

```
If you select 'yes' or 'y' you agree to be bound by all the terms
and conditions se out in the License.
```

```
If you select 'no' or 'n', this product will not be installed.
```

```
(y/n) y
```

```
Complete SafeNet Luna HSM Client will be installed. This includes SafeNet Luna Network HSM,
SafeNet Luna PCIe HSM, SafeNet Luna USB HSM AND SafeNet Luna Backup HSM.
```

```
Select 'yes' or 'y' to proceed with the install.
```

```
Select 'no' or 'n', to cancel this install.
```

```
Continue (y/n)? y
```

## Interrupting the Installation

Do not interrupt the installation script in progress, and ensure that your host computer is served by an uninterruptible power supply (UPS). If you press [Ctrl] [C], or otherwise interrupt the installation (OS problem, power outage, other), some components will not be installed. It is not possible to resume an interrupted install process. The result of an interruption depends on where, in the process, the interruption occurred (what remained to install before the process was stopped).

As long as the cryptoki RPM package is installed, any subsequent installation attempt results in refusal with the message "A version of SafeNet Luna HSM Client is already installed."

If components are missing or are not working properly after an interrupted installation, or if you wish to install any additional components at a later date (following an interrupted installation, as described), you would need to uninstall everything first. If **sh uninstall.sh** is unable to do it, then you must uninstall all packages manually.

Because interruption of the install.sh script is not recommended, and mitigation is possible, this is considered a low-likelihood corner case, fully addressed by these comments.

## After Installation

When you have installed the software onto a Client, the next task is to configure the SafeNet Luna HSM, as described in the *Configuration Guide*.

## Linux SafeNet Luna HSM Client Installation

You must install the SafeNet Luna HSM Client software on each client workstation you will use to access a SafeNet Luna HSM. This section describes how to install the client on a workstation running Linux, and contains the following topics:

- > ["Prerequisites" below](#)
- > ["Installing the Client Software" on the next page](#)
- > ["Controlling User Access to Your Attached HSMs and Partitions" on page 40](#)
- > ["Uninstalling the Client Software or Removing Components" on page 41](#)
- > ["Java" on page 42](#)
- > ["Scripted or Unattended Installation" on page 42](#)
- > ["Interrupting the Installation" on page 43](#)

Refer to the Customer Release Notes for a complete list of the supported Linux operating systems. These instructions assume that you have already acquired the SafeNet Luna HSM Client software.

### Prerequisites

Before starting the installation, ensure that you have satisfied the following prerequisites:

#### Components Required to Build the PCIe Driver and the Backup HSM Driver

On Linux, the PCIe driver module (and optionally the Backup HSM driver) is built by the client as part of the installation if you choose to install the Luna PCIe HSM component or the Backup HSM. To build the driver, the client requires the following items:

- > Kernel headers for build
- > kernel-devel package
- > rpmbuild package
- > C and C++ compilers
- > make command

If any one of these items is missing, the driver build will fail and the client software will not be installed.

**NOTE** The installed *kernel* and *kernel-devel* versions on the Client system must match, in order for the drivers to compile successfully. In general, if the versions do not match, or if you are not sure, use this command **yum install kernel-devel-`uname -r`** before installing SafeNet Luna HSM Client. Note the required backticks, (the key to the left of the 1/! key on the keyboard) surrounding **`uname -r`** (or equivalent command **yum install kernel-devel-\$(uname -r)**).

To check installed versions related to the currently running kernel: **rpm -qa kernel \* | grep \$(uname -r)**.

### Debian Requires alien

The SafeNet Luna HSM Client software is provided as RPM packages. If you are installing on a Debian system, you must have **alien** installed to allow the SafeNet Luna HSM Client installation script to convert the RPM packages to DEB packages. The installation script will stop with a message if you attempt to install on a Debian system without **alien** installed. This applies to any other supported Debian-based Linux distribution, such as Ubuntu.

### SUSE Linux on IBM PPC

JCE un-restriction files must be downloaded from IBM, not from SUN, for this platform. Attempting to use SUN JCE un-restriction files on IBM PowerPC systems with SUSE Linux causes signing errors.

## Installing the Client Software

It is recommended that you refer to the SafeNet Luna HSM Customer Release Notes for any installation-related issues or instructions before installing the client software.

**CAUTION!** You must install the client software using root-level privileges. For security reasons, we recommend that you do not log in as root (or use `su root`) to run the installation script, but instead use the `sudo` command to run the installation script, as detailed below.

### The installation script

The installation script is **install.sh** and is usually launched with **sh install.sh** followed by any options or parameters.

- > interactive: **sh install.sh [-install\_directory <prefix>]**
- > all: **sh install.sh all [-install\_directory <prefix>]**
- > scriptable: **sh install.sh -p [network|pci|usb|backup|ped] [-c sdk|jsp|jcpov|ldpc|snmp] [-install\_directory <prefix>]**

The options on the script are:

- > device(s)
  - "network" is the SafeNet Luna Network HSM (software only, no drivers)
  - "pci" is the SafeNet Luna PCIe HSM (software plus driver for the PCI HSM)
  - "usb" is the SafeNet Luna USB and Backup HSMs (software plus driver for the G5-based and G7-based HSMs)
  - "backup" is software to enable Remote Backup
  - "ped" is software for the SafeNet Luna Remote PED
- > components include the optional Software Development kit, Java providers, SNMP instance (not needed for Network HSM which has it built in)

By default, the Client programs are installed in the **/usr/safenet/lunaclient** directory.

### Flexible Install paths

You can change the installation path for scriptable (non-interactive) installs by changing the prefix with the script option **-install\_directory <prefix>**

The prefix, or major location is your choice, and replaces the /usr default portion.

**NOTE** Avoid the use of space characters in directory names.

The script option **-install\_directory** <prefix> is available for scriptable installation, where either "all" or a list of products and components is specified on the command line. The script option **-install\_directory** <prefix> is not used with interactive installation; instead, you are prompted.

The **/safenet/lunaclient** portion is appended by the install script, and provides a predictable structure for additional subdirectories to contain certificate files, and optionally STC files.

Regardless of **-install\_directory** <prefix> provided, some files are not affected by that option (for example, the Chrystoki.conf configuration file goes under /etc, service files need to be in the service directory expected by Linux in order to run at boot time, and so on).

### To install the SafeNet Luna HSM Client software on a Linux workstation

1. Ensure that you have **sudo** privileges on the client workstation.
2. Access the installation software:

Copy or move the **.tar** archive to a suitable directory where you can untar the archive and extract the contents:

```
tar xvf <filename>.tar
```

3. Go to the untarred directory for your operating system (**32** or **64**-bit):

```
cd /<untarred_dir>/<32/64>
```

4. To install the software, run the **install.sh** installation script. You can run the script in interactive mode, or you can script the installation, as described in "[Scripted or Unattended Installation](#)" on page 42.

- To display the help, or a list of available installer options, type:

```
sudo sh install.sh -? or sudo sh install.sh help
```

- To install all available products and optional components, type:

```
sudo sh install.sh all
```

- To selectively install individual products and optional components, type the command without arguments:

```
sudo sh install.sh
```

**NOTE** Do not interrupt the installation script in progress. An uninterruptible power supply (UPS) is recommended. See "[Interrupting the Installation](#)" on page 43 for more information.

5. Type **y** if you agree to be bound by the license agreement. You must accept the license agreement before you can install the software.
6. A list of installable SafeNet devices is displayed. Select as many as you require, by typing the number of each (in any order) and pressing **Enter**. As each item is selected, the list updates, with a \* in front of any item that has been selected.

This example shows items 1 and 3 have been selected, and item 4 is about to be selected. The selections work as a toggle - if you wish to make a change, simply type a number again and press **Enter** to de-select it.

Products

Choose Luna Products to be installed

\*[1]: Luna Network HSM

[2]: Luna PCIe HSM

\*[3]: Luna USB HSM

[4]: Luna Backup HSM

[5]: Luna Remote PED

[N|n]: Next

[Q|q]: Quit

Enter selection: 4

When selection is complete, type **N** or **n** for "Next", and press **Enter**. The "Advanced" menu is displayed.

Advanced

Choose Luna Components to be installed

[1]: Luna SDK

[2]: Luna JSP (Java)

[3]: Luna JProv (Java)

[4]: Luna SNMP subagent

[5]: Luna Functionality Module Tools

[6]: Luna Functionality Module Software Development Kit

[B|b]: Back to Products selection

[I|i]: Install

[Q|q]: Quit

Enter selection:

7. Select or de-select any additional items you want to install. Selected items are indicated with a \*. Some items might be pre-selected to provide the optimum experience for the majority of customers, but you can change any selection in the list. When the Components list is adjusted to your satisfaction, press **Enter**.

**NOTE** The installer includes the Luna SNMP Subagent as an option. If you select this option, you will need to move the SafeNet MIB files to the appropriate directory for your SNMP application after installation is complete, and you will need to start the SafeNet subagent and configure it for use with your agent. See the *Administration Guide* for more information.

**Luna SDK required with FMs** - If you choose the Functionality Module (FM) options, the interactive `install.sh` script populates the Luna SDK as well, because of dependencies in the FM samples. If you run the installer with command-line options (non-interactive), and you choose FM items without also choosing Luna SDK, the script just gives a warning and stops. ELDK (the Embedded Linux Development Kit) is installed with FMs - The ELDK package is installed as part of the FM SDK component, for Linux, and must reside at `/opt/eldk-5.6`. It is not relocatable.

If the script detects an existing `cryptoki` library, it stops and suggests that you uninstall your previous SafeNet software before starting the SafeNet Luna HSM Client installation again.

8. The system installs all packages related to the products and any optional components that you selected.
9. [Optional] For easy use of the SafeNet Luna HSM Client tools, add their directories to the `$PATH`.
  - a. Edit your system's **bash\_profile** file using an editing tool.
 

```
vi ~/.bash_profile
```
  - b. Add the following lines to the end of the file:
 

```
export PATH="$PATH:/usr/safenet/lunaclient/bin"
export PATH="$PATH:/usr/safenet/lunaclient/sbin"
```
  - c. Source the updated **bash\_profile**.
 

```
source ~/.bash_profile
```

## Controlling User Access to Your Attached HSMs and Partitions

By default, only the root user has access to your attached HSMs and partitions. You can specify a set of non-root users that are permitted to access your attached HSMs and partitions, by adding them to the **hsmusers** group.

**NOTE** The client software installation automatically creates the `hsmusers` group if one does not already exist on your system. The `hsmusers` group is retained when you uninstall the client software, allowing you to upgrade your client software while retaining your `hsmusers` group configuration.

### Adding users to hsmusers group

To allow non-root users or applications access your attached HSMs and partitions, assign the users to the **hsmusers** group. The users you assign to the `hsmusers` group must exist on the client workstation. Users you add to the `hsmusers` group are able to access your attached HSMs and partitions. Users who are not part of the `hsmusers` group are not able to access your attached HSMs and partitions.

### To add a user to hsmusers group

1. Ensure that you have **sudo** privileges on the client workstation.

2. Add a user to the hsmusers group:

```
sudo gpasswd --add <username> hsmusers
```

where <username> is the name of the user you want to add to the hsmusers group.

### Removing users from hsmusers group

Should you wish to rescind a user's access to your attached HSMs and partitions, you can remove them from the hsmusers group.

**NOTE** The user you delete will continue to have access to the HSM until you reboot the client workstation.

### To remove a user from hsmusers group

1. Ensure that you have **sudo** privileges on the client workstation.
2. Remove a user from the hsmusers group:

```
sudo gpasswd -d <username> hsmusers
```

where <username> is the name of the user you want to remove from the hsmusers group. You must log in again to see the change.

## Uninstalling the Client Software or Removing Components

You may need to uninstall the client software before upgrading to a new version, or if it is no longer required.

### To uninstall the client software

1. Ensure that you have **sudo** privileges on the client workstation.
2. Go to the client installation directory:

```
cd /usr/safenet/lunaclient/bin
```

3. Run the uninstall script:

```
sudo sh uninstall.sh
```

**CAUTION!** The hsmusers group is not removed when the client software is uninstalled. Should you install the client again on the same system, all users previously in the group will have access to your attached HSMs and partitions by default. You must remove users from the group if you want to restrict their access. See "[Removing users from hsmusers group](#)" above.

### To remove individual components

To uninstall the JSP component or the SDK component, you must uninstall SafeNet Luna HSM Client completely, then re-run the installation script without selecting the unwanted component(s).

## Java

If you install the Luna Java Security Provider (JSP), refer to [SafeNet JSP Overview and Installation](#) for additional setup procedures for your operating system.

## Scripted or Unattended Installation

If you prefer to run the installation from a script, rather than interactively, run the command with the options **-p** <list of SafeNet products> and **-c** <list of SafeNet components>. To see the syntax, run the command with **help** like this:

```
[myhost]$ sudo sh install.sh help
[sudo] password for fred
```

At least one product should be specified.

usage:

```
install.sh      - Luna Client install through menu
install.sh help - Display scriptable install options
install.sh all  - Complete Luna Client install

install.sh -p [network|pci|usb|backup|ped] [-c sdk|jsp|jcprov|ldpc|snmp]

-p <list of Luna products>
-c <list of Luna components> - Optional. All components are installed if not provided
```

Luna products options

```
network - Luna Network HSM
pci      - Luna PCIe HSM
usb      - Luna USB HSM
backup  - Luna Backup HSM
ped      - Luna Remote PED
```

Luna components options

```
sdk      - Luna SDK
jsp      - Luna JSP (Java)
jcprov   - Luna JC PROV (Java)
snmp     - Luna SNMP subagent
```

```
[myhost]$
```

For scripted/automated installation, your script will need to capture and respond to the License Agreement prompt, and to the confirmation prompt. For example:

```
[myhost]$ sudo sh install.sh all
```

```
IMPORTANT: The terms and conditions of use outlined in the software
license agreement (Document #008-010005-001_053110) shipped with the product
("License") constitute a legal agreement between you and SafeNet Inc.
Please read the License contained in the packaging of this
product in its entirety before installing this product.
```

Do you agree to the License contained in the product packaging?

If you select 'yes' or 'y' you agree to be bound by all the terms and conditions set out in the License.

If you select 'no' or 'n', this product will not be installed.

(y/n) **y**

Complete Luna Client will be installed. This includes SafeNet Luna Network HSM, SafeNet Luna PCIe HSM, SafeNet Luna USB HSM, SafeNet Luna Backup HSM and SafeNet Luna Remote PED.

Select 'yes' or 'y' to proceed with the install.

Select 'no' or 'n', to cancel this install.

Continue (y/n)? **y**

## Interrupting the Installation

Do not interrupt the installation script in progress, and ensure that your host computer is served by an uninterruptible power supply (UPS). If you press [CTRL] [C], or otherwise interrupt the installation (OS problem, power outage, other), some components will not be installed. It is not possible to resume an interrupted install process. The result of an interruption depends on where, in the process, the interruption occurred (what remained to install before the process was stopped).

As long as the cryptoki RPM package is installed, any subsequent installation attempt results in refusal with the message "A version of SafeNet Luna HSM Client is already installed."

If components are missing or are not working properly after an interrupted installation, or if you wish to install any additional components at a later date (following an interrupted installation, as described), you would need to uninstall everything first. If **sh uninstall.sh** is unable to do it, then you must uninstall all packages manually.

## Solaris SafeNet Luna HSM Client Installation

These instructions assume that you have already acquired the SafeNet Luna HSM Client software, in the form of a downloaded .tar archive.

You must install the SafeNet Luna HSM Client software on each client workstation you will use to access a SafeNet Luna HSM. This section describes how to install the client on a workstation running Solaris, and contains the following topics:

- > ["Prerequisites" below](#)
- > ["Installing the Client Software" on the next page](#)
- > ["Controlling User Access to Your Attached HSMs and Partitions" on page 47](#)
- > ["Uninstalling the SafeNet Luna HSM Client Software" on page 48](#)
- > ["Java" on page 48](#)
- > ["Scripted or Unattended Installation" on page 48](#)
- > ["Interrupting the installation - \[Ctrl\] \[C\]" on page 49](#)

Applicability to specific versions of Solaris is summarized in the Customer Release Notes for the current release.

**NOTE** Before installing a SafeNet system, you should confirm that the product you have received is in factory condition and has not been tampered with in transit. Refer to the Startup Guide included with your product shipment. If you have any questions about the condition of the product that you have received, contact Gemalto Support.

Each computer that connects to the SafeNet Luna Network HSM appliance as a client must have the cryptoki library, the vtl client shell and other utilities and supporting files installed.

Each computer that contains, or is connected to a SafeNet Luna USB HSM or a SafeNet Luna PCIe HSM must have the cryptoki library and other utilities and supporting files installed.

**NOTE** This example shows all the SafeNet Luna HSM Client products and components. Some items are not supported on all operating systems and therefore do not appear as you proceed through the installation script.

### Prerequisites

Before starting the installation, ensure that you have satisfied the following prerequisites:

#### Random Number Generator (RNG) or Entropy Gathering Daemon (EGD)

Ensure that you have a Random Number Generator (RNG) or Entropy Gathering Daemon (EGD) on your system in one of the following locations:

- > /dev/egd-pool
- > /etc/egd-pool,
- > /etc/entropy

> /var/run/egd-pool

## RNG/EGD

Cryptographic algorithms, including those that assure the security of communication – such as in OpenSSL and other protocols – depend upon random numbers for the creation of strong keys and certificates. A readily available source of random data is the entropy that exists in complex computer processes. Utilities exist for every operating system, to gather bits of system entropy into a pool, which can then be used by other processes.

Windows and Linux have these installed by default. Other systems might not. See your system administrator.

## Entropy Pool

In the case of SafeNet Luna Network HSM, the SafeNet Luna HSM Client administration tool (**vtl**) expects to find a source of randomness at **/dev/random**. If one is not found, **vtl** fails, because the link cannot be secured from the Client end.

If your system does have an entropy pool, but the random number generator (RNG) is not in the expected place, then you can create a symbolic link between the actual location and one of the following:

- > /dev/random
- > /dev/egd-pool
- > /etc/egd-pool
- > /etc/entropy
- > /var/run/egd-pool

If your system does not have an entropy-gathering daemon or random number generator, please direct your system administrator to install one, and point it to one of the named devices.

## Installing the Client Software

It is recommended that you refer to the SafeNet Luna HSM Customer Release Notes for any installation-related issues or instructions before you begin the following software installation process.

**CAUTION!** You must be logged in as **root** when you run the installation script.

By default, the Client programs are installed in the **/opt/safenet/lunaclient/bin** directory.

### To install the SafeNet Luna HSM Client software on a Solaris workstation

1. Log on to the client system, open a console or terminal window, and use **su** to gain administrative permissions for the installation.
2. Access the SafeNet Luna HSM Client software:
  - a. Copy or move the **.tar** archive to a suitable directory where you can untar the archive and launch the installation script.
  - b. Extract the contents from the archive:
 

```
tar xvf <filename>.tar
```
3. Go to the install directory for your architecture:

Architecture	Path
Solaris Sparc 64-bit	LunaClient_7.X.0_SolarisXXSparc/64
Solaris x86 64-bit	LunaClient_7.X.0_SolarisXXx86/64

4. To see the help, or a list of available installer options, type:

**sh install.sh -?** or **sh install.sh --help**

To install all available products and optional components, type:

**sh install.sh all**

To selectively install individual products and optional components, type the command without arguments:

**sh install.sh**

5. Type **y** if you agree to be bound by the license agreement.
6. A list of installable SafeNet products is displayed (might be different, depending on your platform). Select as many as you require, by typing the number of each (in any order) and pressing **Enter**. As each item is selected, the list updates, with a "\*" in front of any item that has been selected. The following example shows that items 1 and 3 have been selected, and item 4 is about to be selected.

```
Products
Choose Luna Products to be installed
 * [1]: SafeNet Luna Network HSM
   [2]: SafeNet Luna PCIe HSM
 * [3]: SafeNet Luna USB HSM
   [4]: SafeNet Luna Backup HSM
   [N|n]: Next
   [Q|q]: Quit
Enter selection: 4
```

7. When the selection is complete, type **N** or **n** for "Next", and press **Enter**. If you wish to make a change, simply type a number again and press **Enter** to de-select a single item.
8. The next list is titled "Advanced" and includes additional items to install. Some items might be pre-selected to provide the optimum SafeNet Luna HSM experience for the majority of customers, but you can change any selection in the list. When the Components list is adjusted to your satisfaction, press **Enter**.

**NOTE** The installer includes the SafeNet SNMP Subagent as an option. If you select this option, you will need to move the SafeNet MIB files to the appropriate directory for your SNMP application after installation is complete, and you will need to start the SafeNet subagent and configure for use with your agent. See the *Administration Guide* for more information.

9. If the script detects an existing cryptoki library, it stops and suggests that you uninstall your previous SafeNet software before starting the SafeNet Luna HSM Client installation again.
10. The system installs all packages related to the products and any optional components that you selected.
11. Although FMs are supported on Linux and Windows clients only in this release, the FM architecture requires a configuration file setting to allow partition login on an FM-enabled HSM. If the HSM you will be using with this client is FM-enabled (see "[Preparing the SafeNet Luna PCIe HSM to Use FMs](#)" on page 1 for more information), you must add the following entry to the [Misc] section of the Chrystoki.conf file:

**[Misc]****LoginAllowedOnFMEEnabledHSMs=1**

**NOTE** As a general rule, do not modify the `Chrystoki.conf/crystoki.ini` file, unless directed to do so by Gemalto Technical Support. If you do modify the file, never insert TAB characters - use individual space characters. Avoid modifying the PED timeout settings. These are now hardcoded in the appliance, but the numbers in the `Chrystoki.conf` file must match.

## Controlling User Access to Your Attached HSMs and Partitions

By default, only the root user has access to your attached HSMs and partitions. You can specify a set of non-root users that are permitted to access your attached HSMs and partitions, by adding them to the **hsmusers** group.

**NOTE** The client software installation automatically creates the **hsmusers** group if one does not already exist on your system. The **hsmusers** group is retained when you uninstall the client software, allowing you to upgrade your client software while retaining your **hsmusers** group configuration.

### Adding users to hsmusers group

To allow non-root users or applications access your attached HSMs and partitions, assign the users to the **hsmusers** group. The users you assign to the **hsmusers** group must exist on the client workstation. Users you add to the **hsmusers** group are able to access your attached HSMs and partitions. Users who are not part of the **hsmusers** group are not able to access your attached HSMs and partitions.

#### To add a user to hsmusers group

1. Ensure that you have **sudo** privileges on the client workstation.
2. Add a user to the **hsmusers** group:

```
sudo gpasswd --add <username> hsmusers
```

where `<username>` is the name of the user you want to add to the **hsmusers** group.

### Removing users from hsmusers group

Should you wish to rescind a user's access to your attached HSMs and partitions, you can remove them from the **hsmusers** group.

**NOTE** The user you delete will continue to have access to the HSM until you reboot the client workstation.

#### To remove a user from hsmusers group

1. Ensure that you have **sudo** privileges on the client workstation.
2. Remove a user from the **hsmusers** group:

```
sudo gpasswd -d <username> hsmusers
```

where <username> is the name of the user you want to remove from the **hsmusers** group. You must log in again to see the change.

## Uninstalling the SafeNet Luna HSM Client Software

1. **cd /opt/safenet/lunaclient/bin**
2. **sh uninstall.sh**

### Java

If you install the Luna Java Security Provider (JSP), refer to [SafeNet JSP Overview and Installation](#) for additional setup procedures for your operating system.

## Scripted or Unattended Installation

If you prefer to run the installation from a script, rather than interactively, run the command with the options **-p** <list of SafeNet products> and **-c** <list of SafeNet components>. To see the syntax, run the command with **help** like this:

```
[myhost]$ sudo sh install.sh help
[sudo] password for fred
```

At least one product should be specified.

usage:

```
install.sh      - Luna Client install through menu
install.sh help - Display scriptable install options
install.sh all  - Complete Luna Client install
```

```
install.sh -p [sa|pci|g5|rb] [-c sdk|jsp|jcprov|ldpc|snmp]
```

```
-p <list of Luna products>
```

```
-c <list of Luna components> - Optional. All components are installed if not provided
```

Luna products options

```
sa      - SafeNet Luna Network HSM
pci     - SafeNet Luna PCIe HSM
g5      - SafeNet Luna USB HSM
rb      - SafeNet Luna Backup HSM
```

Luna components options

```
sdk     - Luna SDK
jsp     - Luna JSP (Java)
jcprov  - Luna JC PROV (Java)
snmp    - Luna SNMP subagent
```

```
[myhost]$
```

For scripted/automated installation, your script will need to capture and respond to the License Agreement prompt, and to the confirmation prompt. For example:

```
[myhost]$ sudo sh install.sh all
```

**IMPORTANT:** The terms and conditions of use outlined in the software license agreement (Document #008-010005-001\_053110) shipped with the product ("License") constitute a legal agreement between you and SafeNet Inc.

Please read the License contained in the packaging of this product in its entirety before installing this product.

Do you agree to the License contained in the product packaging?

If you select 'yes' or 'y' you agree to be bound by all the terms and conditions set out in the License.

If you select 'no' or 'n', this product will not be installed.

(y/n) **y**

Complete Luna Client will be installed. This includes SafeNet Luna Network HSM, SafeNet Luna PCIe HSM, SafeNet Luna USB HSM AND SafeNet Luna Backup HSM.

Select 'yes' or 'y' to proceed with the install.

Select 'no' or 'n', to cancel this install.

Continue (y/n)? **y**

### Interrupting the installation - [Ctrl] [C]

Do not interrupt the installation script in progress, and ensure that your host computer is served by an uninterruptible power supply (UPS). If you press [Ctrl] [C], or otherwise interrupt the installation (OS problem, power outage, other), some components will not be installed. It is not possible to resume an interrupted install process. The result of an interruption depends on where, in the process, the interruption occurred (what remained to install before the process was stopped).

As long as the cryptoki package is installed, any subsequent installation attempt results in refusal with the message "A version of Luna Client is already installed." Removing the library allows the script to clean up remaining components, so that you can install again.

---

### What to do if installation is incomplete or damaged

1. If SNFTlibcryptoki has been installed, uninstall it manually.
2. Run the Client install script again. Now that SNFTlibcryptoki is removed, the install script removes any stray packages and files.
3. Install again, to perform a clean installation.

### After Installation

When you have installed the software onto a Client, the next task is to configure the SafeNet Luna HSM, as described in the *Configuration Guide*.

## Windows SafeNet Luna HSM Client Installation

This section describes how to install the SafeNet Luna HSM Client software on Windows. It contains the following topics:

- > "Required Client Software" below
- > "Prerequisites" below
- > "Installing the SafeNet Luna HSM Client Software" below
- > "Modifying the Installed Windows SafeNet Luna HSM Client Software" on page 54
- > "Java" on page 55
- > "SafeNet CSP and KSP" on page 55
- > "Uninstalling the SafeNet Luna HSM Client Software" on page 56
- > "After Installation" on page 58
- > "Troubleshooting" on page 58

Applicability to specific versions of Windows is summarized in the Customer Release Notes for this release.

**NOTE** Before installing a SafeNet Luna HSM system, confirm that the product you have received is in factory condition and has not been tampered with in transit. Refer to the Startup Guide included with your product shipment. If you have any questions about the condition of the product that you have received, contact Technical Support immediately.

### Required Client Software

Each computer that connects to a SafeNet Luna Network HSM as a Client must have the cryptoki library, the **vtl** client shell and other utilities and supporting files installed.

Each computer that contains, or is connected to a SafeNet Luna PCIe HSM or a SafeNet Luna USB HSM must have the cryptoki library and other utilities and supporting files installed.

### Prerequisites

The SafeNet Luna HSM Client installer requires the Microsoft Universal C Runtime (Universal CRT) to run properly. Universal CRT requires your Windows machine to be up to date. Before running the installer, ensure that you have the Universal C Runtime in Windows (KB2999226) update and its prerequisites installed on your machine. The following updates must be installed in order:

1. March 2014 Windows servicing stack update (See <https://support.microsoft.com/en-us/help/2919442>)
2. April 2014 Windows update (See <https://support.microsoft.com/en-us/help/2919355>)
3. Universal C Runtime update (See <https://support.microsoft.com/en-us/kb/2999226>)

### Installing the SafeNet Luna HSM Client Software

The supported Windows servers are 64-bit. Hardware drivers are 64-bit only.

For compatibility of our HSMs with Windows CAPI we have SafeNet CSP, and for the newer Windows CNG we have SafeNet KSP. See "SafeNet CSP and KSP" on page 55 for more information.

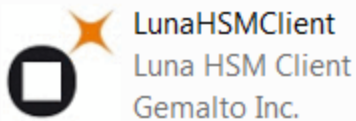
Interactive (prompted, this page) and non-interactive (no prompts "[Scripted/Unattended Windows Installation/Uninstallation](#)" on page 60) installation options are available.

### To install the SafeNet Luna HSM Client software

1. Log into Windows as “Administrator”, or as a user with administrator privileges (see "[Troubleshooting](#)" on page 58).
2. Uninstall any previous versions of the Client software before you proceed (see "[Uninstalling the SafeNet Luna HSM Client Software](#)" on page 56).

**NOTE** If you do not uninstall previous SafeNet Luna HSM Client versions, you might face installation issues, such as failure to install the new client.

3. Download the SafeNet Luna HSM Client from the Thales Group Support Portal at <https://supportportal.gemalto.com> and extract the .zip to an appropriate folder.
4. In the extracted directory, locate the folder for your Windows architecture and double click **LunaHSMClient.exe**.



5. The Custom Setup dialog allows you to choose which software components you wish to install. Click a product to select the components to install, or click Select All to install all available components.

The installer includes the SafeNet SNMP Subagent as an option with any of the SafeNet Luna HSMs, except SafeNet Luna Network HSM, which has agent and subagent built in. After installation of the SafeNet SNMP Subagent is complete, you will need to move the SafeNet MIB files to the appropriate directory for your SNMP application, and you will need to start the SafeNet subagent and configure for use with your agent, as described in [SNMP Monitoring](#) in the *Administration Guide*.

**Luna HSM Client**   
Version: security to be free


**Welcome to the Luna HSM Client setup wizard**  
This setup wizard will install Luna HSM Client on your computer. Please customize the install below.

Install location:  
C:\Program Files\SafeNet\LunaClient

**Install options:**

<b>Luna Devices</b>	<b>Features</b>
<input type="checkbox"/> Select All	<input type="checkbox"/> Select All
<input type="checkbox"/> Network	<input type="checkbox"/> CSP (CAPI) / KSP (CNG)
<input type="checkbox"/> PCIe	<input type="checkbox"/> JCE / JCA Provider (JSP)
<input type="checkbox"/> USB	<input type="checkbox"/> PKCS #11 (JCProv)
<input type="checkbox"/> Backup	<input type="checkbox"/> Software SDK
<input type="checkbox"/> Remote PED	<input type="checkbox"/> SNMP Subagent
	<input type="checkbox"/> FM Tools
	<input type="checkbox"/> FM SDK

I agree to the terms of the [SafeNet Software License Agreement](#).

**Luna HSM Client**   
Version: security to be free

**Welcome to the Luna HSM Client setup wizard**  
This setup wizard will install Luna HSM Client on your computer. Please customize the install below.

Install location:  
C:\Program Files\SafeNet\LunaClient\

**Install options:**

<b>Luna Devices</b>	<b>Features</b>
<input type="checkbox"/> Select All	<input checked="" type="checkbox"/> Select All
<input type="checkbox"/> Network	<input checked="" type="checkbox"/> CSP (CAPI) / KSP (CNG)
<input checked="" type="checkbox"/> PCIe	<input checked="" type="checkbox"/> JCE / JCA Provider (JSP)
<input type="checkbox"/> USB	<input checked="" type="checkbox"/> PKCS #11 (JCProv)
<input type="checkbox"/> Backup	<input checked="" type="checkbox"/> Software SDK
<input checked="" type="checkbox"/> Remote PED	<input checked="" type="checkbox"/> SNMP Subagent
	<input checked="" type="checkbox"/> FM Tools
	<input checked="" type="checkbox"/> FM SDK

**NOTE Dependencies and considerations when installing:**

- > The FM Tools and FM SDK are useful to you only if you will be using or creating Functionality Modules, to add custom abilities to your HSMs.
- > The FM SDK requires that you install PCIe HSM software and drivers.
- > Similarly, if you are using third-party software to make standard cryptographic calls to the HSM, and are not creating application programs, then you can forego loading the Software Development Kit.
- > There is no harm in installing unneeded components; they do not conflict.
- > The FM SDK option remains gray/unselectable until "Software SDK" is selected, because some of the FM SDK samples have dependencies on General Cryptoki Samples that are part of "Software SDK".

After you select the components you want to install, click **Install**.

- a. Agree to the terms of the License Agreement to proceed with installation. To view the agreement text, click the link in the dialog. The installer loads a PDF version if a PDF reader is available; otherwise it launches a text editor and a plain-text version of the agreement.
  - b. If Windows presents a security notice asking if you wish to install the device driver from SafeNet, click "Always trust software from SafeNet Canada" and click **Install** to accept.
  - c. If you choose not to install the driver(s), your SafeNet Luna HSM Client cannot function with any locally-connected SafeNet hardware (which includes SafeNet Luna PCIe HSM, SafeNet Luna USB HSM, or SafeNet Luna Backup HSMs).
6. When the installation completes, the button options are Uninstall, Modify, or Quit; click **Quit** to finish.



If you launch the installer again, you should see the final dialog, above, allowing you to modify the current SafeNet Luna HSM Client installation if desired, or to uninstall.

7. [Optional] For easy use of the SafeNet Luna HSM Client command-line tools, add the directory to the system PATH variable.

"C:\Program Files\SafeNet\Lunaclient"

## Modifying the Installed Windows SafeNet Luna HSM Client Software

If you wish to modify the installation (perhaps to add a component or product that you did not previously install), you must re-run the current installer and ensure that the desired options are selected.

**NOTE** This feature has software and/or firmware dependencies. See [Version Dependencies by Feature](#) for more information.

### To modify the installed SafeNet Luna HSM Client software

1. Run the **LunaHSMClient.exe** program again. Because the software is already installed on your computer, the following dialog is displayed (in this example, devices and features were previously installed, and the task is to uninstall a couple of items):



2. Select or deselect individual Devices or Features, as desired.



3. Click **Modify**. The client software is updated (items are added or removed).

If you are uninstalling some items, or if you are adding features, the dialog shows a progress bar briefly, and then shows the current status.

If you are adding a Luna Device, then you might be prompted with the operating system pop-up to accept/trust the driver. Do so.

4. Click **Quit** when the modification is complete.

**NOTE** You can also use **Programs and Features** in the Windows Control Panel to launch the Uninstall/Modify dialog for the client software.

## Java

If you install the Luna Java Security Provider (JSP), refer to [SafeNet JSP Overview and Installation](#) for additional setup procedures for your operating system.

## SafeNet CSP and KSP

Thales Group provides SafeNet CSP for applications running in older Windows crypto environments running Microsoft Certificate Services (CAPI), and SafeNet KSP for newer Windows clients running Cryptography Next Generation (CNG). Consult Microsoft documentation to determine which one is appropriate for your client operating system.

- > [SafeNet CSP Registration Utilities](#)
- > [SafeNet KSP for CNG Registration Utilities](#)

If the **SafeNet CSP (CAPI) / SafeNet KSP(CNG)** option is selected at installation time, the **SafeNetKSP.dll** file is installed in **C:\Windows\System32** (used for 64-bit KSP).

**NOTE** The **cryptoki.ini** file, which specifies many configuration settings for your HSM and related software, includes a line that specifies the path to the appropriate libNT for use with your application(s). Verify that the path is correct.

## USB-powered PED

The SafeNet Luna PIN Entry Device (PED) v2.8 contains new hardware that enables the PED to be USB-powered; there is no longer a requirement for an external DC power Adapter. PED v2.8 is functionally equivalent to your existing (previous-generation) PEDs and is compatible with HSM versions, 5.x, 6.x, and 7.x.

PED v2.8 ships with firmware 2.8.0. Note that you cannot upgrade existing PEDs to the 2.8.0 version; existing PEDs continue to need a separate DC power adapter for remote PED and upgrade use. The model number on the manufacturer's label identifies the refreshed PED: PED-06-0001. An installed driver is required; see step 1, below.

### To use the new USB-powered PED

1. Ensure the SafeNet Luna HSM Client software is installed on the Windows computer that will act as the PED Server to your SafeNet Luna HSM. Installing the Remote PED component of the SafeNet Luna HSM Client installs the required driver.

**NOTE** A USB connection, without the driver software, only illuminates the PED screen, with no menu. An installed and running PED driver, on the connected computer, is required for the PED to fully boot and to display its menu.

2. Connect the PED to the computer where you installed the Remote PED component of the SafeNet Luna HSM Client, using the USB micro connector on the PED and a USB socket on your computer.
3. After you connect the PED to the host computer, it will take 30 to 60 seconds for initial boot-up, during which time a series of messages are displayed, as listed below:

**BOOT V.1.1.0-1**

**CORE V.3.0.0-1**

**Loading PED...**

**Entering...**

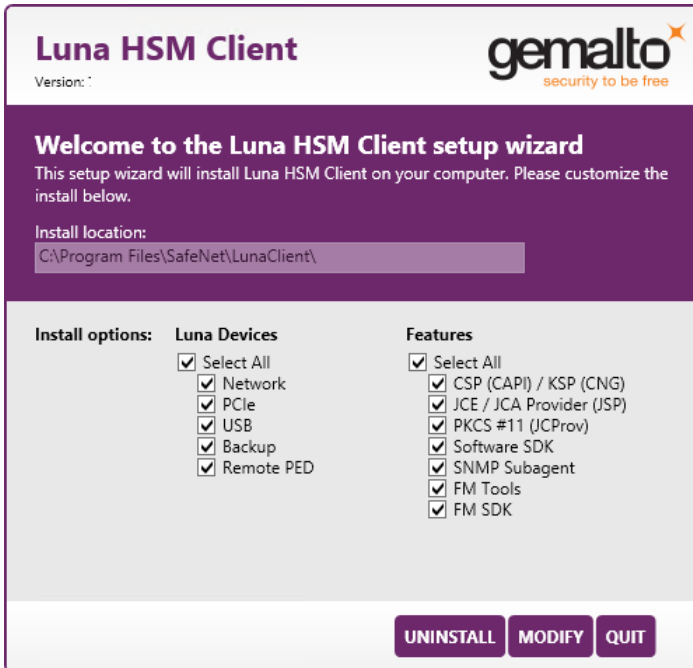
4. After the boot process is complete, the PED displays **Local PED mode** and the **Awaiting command...** prompt. Your new PED is now ready for use.
5. To enter Remote PED mode, if needed, exit Local PED mode with the "<" key, and from the **Select Mode** menu, select option **7 Remote PED**.

## Uninstalling the SafeNet Luna HSM Client Software

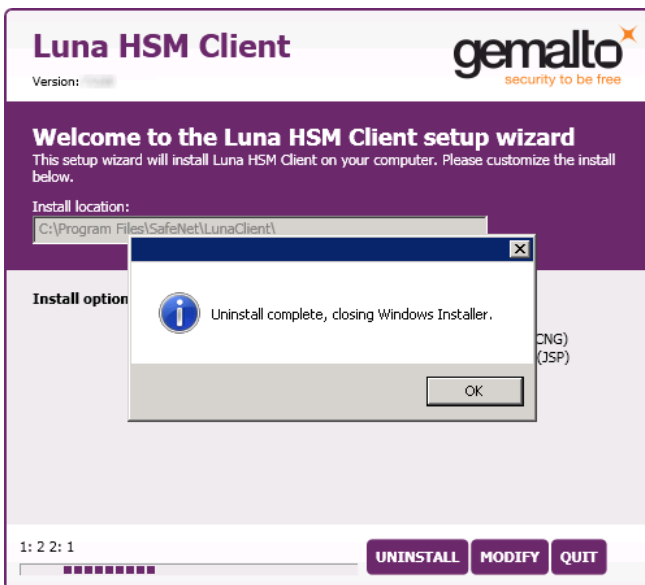
You need to uninstall SafeNet Luna HSM Client before installing a new version. If you wish to modify the installation (perhaps to add a component or product that you did not previously install), you must uninstall the current installation and re-install with the desired options. If you have a SafeNet Luna Backup HSM connected to the client workstation, either disconnect it or stop the PEDclient service ([pedclient mode stop](#)) before you proceed.

## To uninstall the SafeNet Luna HSM Client software

1. Run the **LunaHSMClient.exe** program again. Because the software is already installed on your computer, the following dialog is displayed, showing which components are currently installed (for this example, all Devices and all Features were previously installed):



2. Click **Uninstall**. The client software is uninstalled.

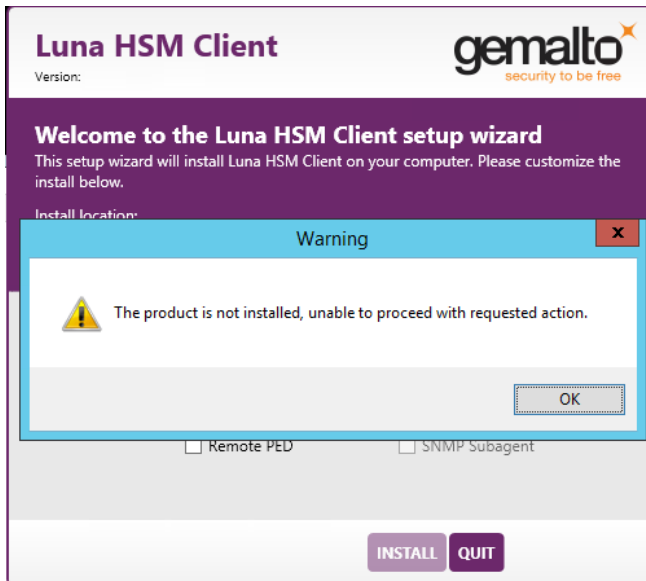


3. When the uninstallation is complete, click **OK** to dismiss the operating system's confirmation dialog.

**NOTE** You can also use **Programs and Features** in the Windows Control Panel to uninstall the client software.

## Uninstall if not present

If the SafeNet Luna HSM Client software has been uninstalled, and you launch the installer in uninstall mode, from the command line, the installer starts, looks for the installed software, fails to find it, and presents a Windows dialog to that effect.



If the SafeNet Luna HSM Client software has been uninstalled, nothing related to the client appears in Windows Control Panel, so nothing exists to launch from that avenue.

## After Installation

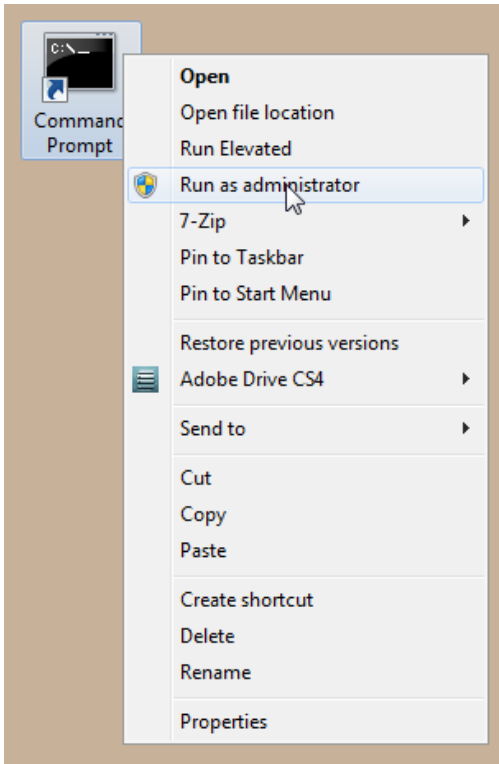
When you have installed the software, the next task is to configure the SafeNet Luna HSM, as described in the *Configuration Guide*.

Open a new command-line/console window to allow the library path to be found before you run LunaCM or other utilities that require the library.

## Troubleshooting

If you are not the Administrator of the computer on which SafeNet Luna HSM Client is being installed, or if the bundle of permissions in your user profile does not allow you to launch the installer with "Run as Administrator", then some services might not install properly. One option is to have the Administrator perform the installation for you.

Another approach might be possible. If you have sufficient elevated permissions, you might be able to right-click and open a Command Prompt window as Administrator.



If that option is available, then you can use the command line to move to the location of the **LunaHSMClient.exe** file and launch it there, which permits the needed services to load for PEDclient. See ["Scripted/Unattended Windows Installation/Uninstallation" on the next page](#) for instructions on how to install the client software from the command line.

## Scripted/Unattended Windows Installation/Uninstallation

This section describes how to perform unattended or scripted installations on Windows platforms. The following procedures are described:

- > ["Command line options overview" below](#)
- > ["Installing the SafeNet Luna HSM Client for the SafeNet Luna Network HSM" on page 63](#)
- > ["Installing the SafeNet Luna HSM Client for the SafeNet Luna PCIe HSM" on page 63](#)
- > ["Installing the SafeNet Luna HSM Client for the SafeNet Luna USB HSM" on page 63](#)
- > ["Installing the SafeNet Luna HSM Client for the SafeNet Luna Backup HSM" on page 64](#)
- > ["Installing the SafeNet Luna HSM Client for Remote PED" on page 64](#)
- > ["Installation Location " on page 64](#)
- > ["Logging" on page 65](#)
- > ["Uninstalling the SafeNet Luna HSM Client" on page 65](#)

If you want to perform an interactive installation, using the graphical, interactive installer, see ["Windows SafeNet Luna HSM Client Installation" on page 50](#)

**NOTE** Unattended installation stores the root certificate in the certificate store and marks the publisher (in this case, SafeNet, Inc.) as trusted for future installations. You are not prompted to trust SafeNet Inc. as a driver publisher during unattended installation.

### Command line options overview

The following command-line options are available:

Option	Values	Description
addlocal=	Various (see below)	Takes one-or-more device values, and one-or-more feature values, as a comma-separated list. Case insensitive. Values may be quoted or not.
installdir=	A fully qualified folder path to install the client software	Case insensitive. Default value is "c:\program files\safenet\lunaclient". Enclose paths containing spaces in "".
/install	N/A	Install the product and features.
/uninstall	N/A	Remove the product and features.
/quiet	N/A	Performs a silent installation; no prompts or messages. (See Note below this table)
/norestart	N/A	Prevents a reboot, post-installation. Any reboots must be performed manually.

Option	Values	Description
/log	The name of a log file	Generates a highly detailed series of logs of the installation progress. This is required only for product support.

**NOTE** Windows defaults to launching the interactive graphical installer, unless you specify **/quiet** at the command line. Always include the **/quiet** option for scripted/unattended SafeNet Luna HSM Client installation.

The following devices or components are available for use with the `addlocal=` option:

Device identifier value	Can be used with these installable features
NETWORK	CSP_KSP, JSP, SDK, JCProv (*)
PCI	CSP_KSP, JSP, SDK, JCProv, SNMP
USB	CSP_KSP, JSP, SDK, JCProv, SNMP
BACKUP	SNMP (this device performs backup and restore operations and is not enabled for cryptographic applications)
PED	N/A (Used for remotely authenticating to PED-authenticated HSMs; not used by cryptographic applications - use of this device requires hands-on presence)

The device names are not case-sensitive.

(\* The Network HSM appliance contains its own SNMP support; therefore the SNMP feature is not installed on clients where the Network HSM is the only HSM to be used.)

The following features are available for use with the `addlocal=` option :

Feature identifier value	Can be installed with these Luna devices	Description
CSP_KSP	NETWORK, PCI, USB	Microsoft CSP and KSP
FMSDK	NETWORK, PCIe *	Functionality Modules Software Development Kit
FMTTOOLS	NETWORK, PCIe *	Tools for use when preparing Functionality Modules
JCProv	NETWORK, PCIe, USB	JC PROV PKCS#11
JSP	NETWORK, PCIe, USB	Java Provider component
SDK	NETWORK, PCIe, USB	Software SDK – Java / C++ samples
SNMP	PCIe, USB, Backup	SNMP subagent

The features can be installed together with the listed device(s) only - they cannot be installed separately - and need to be included only once in the command line. For example, if you are installing the NETWORK and PCI devices and you wish to install the CSP / KSP feature, specify CSP\_KSP one time. The feature names are not case-sensitive.

**NOTE** \* If you install FMTOOLS for NETWORK only, then just **mkfm** and the **library** are installed.

If you install FMTOOLS for PCI, then **mkfm** and the **library** along with **ctfm** and **fmrecover** are installed.

If you install FMTOOLS for both NETWORK and PCIe devices, then all four elements are installed.

If you install the FM SDK, the Luna SDK is installed as well, to satisfy dependencies.

Options for **addlocal=** are separated by spaces. Device and feature values are separated by commas, with no spaces, unless the whole list is enclosed between quotation marks. If a space is encountered, outside of paired quotation marks, the next item found is treated as a command option.

## Installing all components and features

Subsequent sections detail how to install the SafeNet Luna HSM Client software, drivers (if necessary), and optional features (like Java support and the SDK), for individual HSMs. This section describes how to install everything at once, so that all SafeNet Luna HSMs and Remote PED are supported and all the optional features are available.

Use the **ADDLOCAL=** option together with the value **all** to install the base client software and the drivers for all SafeNet Luna devices, along with all the features.

### To install the SafeNet Luna HSM Client software and drivers for *all* SafeNet Luna devices and *all* features

From the location of **LunaHSMClient.exe** run the following command:

- > Install the full SafeNet Luna HSM Client software with drivers for all SafeNet Luna HSMs (Network HSM (no driver), PCIe HSM, Backup HSM, Remote PED), as well as all the features (CSP/KSP, JSP, JCProv, C++ SDK, SNMP Subagent)

**LunaHSMClient.exe /install /quiet ADDLOCAL=all**

**NOTE** You can omit the **/quiet** option to see all options in the GUI dialog.

- > [Optional logging] Install the full SafeNet Luna HSM Client software with drivers for all SafeNet Luna HSMs (Network HSM (no driver), PCIe HSM, Backup HSM, Remote PED), as well as all the features (CSP/KSP, JSP, JCProv, C++ SDK, SNMP Subagent), and log the process.

**LunaHSMClient.exe /install /log install.log /quiet ADDLOCAL=all**

**NOTE** The setting **/log** is optional and saves the installation logs to the file named **install.log** in the example. The **install.log** file (whatever name you give it) is required only if troubleshooting an issue with Technical Support.

## Installing the SafeNet Luna HSM Client for the SafeNet Luna Network HSM

Use the **ADDLOCAL=NETWORK** option to install the base client software for the SafeNet Luna Network HSM. Include the values for any optional, individual software components you desire. The base software must be installed first.

### To install the SafeNet Luna HSM Client for the SafeNet Luna Network HSM

From the location of **LunaHSMClient.exe** run one of the following commands:

- > Install the base SafeNet Luna HSM Client software necessary to communicate with SafeNet Luna Network HSM

**LunaHSMClient.exe /install /quiet ADDLOCAL=NETWORK**

- > [Optional] Install the base SafeNet Luna HSM Client software and any of the optional components for the SafeNet Luna Network HSM that you desire:

For example, the following command installs the base software and all of the optional components:

**LunaHSMClient.exe /install /quiet ADDLOCAL=NETWORK,CSP\_KSP,JSP,SDK,JCProv**

If you wish to install only some of the components, just specify the ones you want after the product name (NETWORK in this example).

## Installing the SafeNet Luna HSM Client for the SafeNet Luna PCIe HSM

Use the **ADDLOCAL=PCI** option to install the base client software for the SafeNet Luna PCIe HSM. Include any features you desire. The base software must be installed first.

### To install the SafeNet Luna HSM Client for the SafeNet Luna PCIe HSM

From the location of **LunaHSMClient.exe** run one of the following commands:

- > Install the base SafeNet Luna HSM Client software for SafeNet Luna PCIe HSM

**LunaHSMClient.exe /install /quiet ADDLOCAL=PCI**

- > Install the base SafeNet Luna HSM Client software and any of the optional features for the SafeNet Luna PCIe HSM that you desire:

For example, the following command installs the base software and all of the optional components:

**LunaHSMClient.exe /install /quiet ADDLOCAL=PCI,CSP\_KSP,JSP,SDK,JCProv,SNMP**

If you wish to install only some of the components, just specify the ones you want after the product name (PCI in this example).

## Installing the SafeNet Luna HSM Client for the SafeNet Luna USB HSM

Use the **ADDLOCAL=USB** option to install the base client software for the SafeNet Luna USB HSM. Include any features you desire. The base software must be installed first.

### To install the SafeNet Luna HSM Client for the SafeNet Luna USB HSM

From the location of **LunaHSMClient.exe** run one of the following commands:

- > Install for SafeNet Luna USB HSM

**LunaHSMClient.exe /install /quiet ADDLOCAL=USB**

- > Install the base SafeNet Luna HSM Client software and any of the optional features for the SafeNet Luna USB HSM that you desire:

For example, the following command installs the base software and all of the optional components:

**LunaHSMClient.exe /install /quiet ADDLOCAL=USB,CSP\_KSP,JSP,SDK,JCProv,SNMP**

If you wish to install only some of the components, just specify the ones you want after the product name (USB in this example).

## Installing the SafeNet Luna HSM Client for the SafeNet Luna Backup HSM

Use the **ADDLOCAL=BACKUP** option to install the base client software for the SafeNet Luna Backup HSM, and the optional feature, if desired. For the Backup HSM, which performs backup and restore operations and is not enabled for use with cryptographic applications, the feature you might add is SNMP, if applicable in your environment.

### To install the SafeNet Luna HSM Client for the SafeNet Luna Backup HSM

From the location of **LunaHSMClient.exe** run one of the following commands:

- > Install the base SafeNet Luna HSM Client software for SafeNet Luna Backup HSM

**LunaHSMClient.exe /install /quiet /norestart ADDLOCAL=BACKUP**

- > Install the base SafeNet Luna HSM Client software and an optional component for the SafeNet Luna Backup HSM:

For example, the following command installs the base software and the optional component:

**LunaHSMClient.exe /install /quiet /norestart ADDLOCAL=backup,snmp**

## Installing the SafeNet Luna HSM Client for Remote PED

Use the **ADDLOCAL=** option with component value **PED** to install the client software for the SafeNet Luna Backup HSM.

### To install the SafeNet Luna HSM Client for the SafeNet Luna Backup HSM

- > From the location of **LunaHSMClient.exe** run the following command:

**LunaHSMClient.exe /install /quiet addlocal=ped**

## Installation Location

Specify the installation location, if the default location is not suitable for your situation.

This applies to installation of any Luna Device. Provide the **INSTALLDIR=** option, along with a fully qualified path to the desired target location. For example:

**LunaHSMClient.exe /install /quiet addlocal=all installdir=c:\lunaclient**

That command silently installs all of the SafeNet Luna device software and features to the folder `c:\lunaclient` (in this example). The software is installed into the same subdirectories per component and feature, under that named folder, as would be the case if **INSTALLDIR** was not provided. That is, **INSTALLDIR** changes the prefix or primary client installation folder to the one you specify, and the libraries, devices, tools, certificate folders, etc. are installed in their predetermined relationship, but under the new main folder location.

## Logging

If problems are encountered during installation or uninstallation of the software and you wish to determine the reason, or if Gemalto Technical Support has requested you to do so, detailed logs can be generated and captured by specifying the `/log` option and providing a filename to capture the log output. Two logs are generated – one according to the name given and the other similarly named, with a number appended. Both log files must be sent to Gemalto support if assistance is required.

Example commands that include logging are:

```
LunaHSMClient.exe /install /quiet /log install.log /norestart ADDLOCAL=backup,snmp
```

```
LunaHSMClient.exe /uninstall /quiet /log uninstall.log
```

## Uninstalling the SafeNet Luna HSM Client

You can also perform scripted/unattended uninstallation.

### To uninstall the SafeNet Luna HSM Client

> From the location of **LunaHSMClient.exe** run the following command:

```
LunaHSMClient.exe /uninstall /quiet
```

> To log the uninstallation process, run the following command:

```
LunaHSMClient.exe /uninstall /quiet /log uninstall.log
```

## Adding a DPoD HSM on Demand Service

SafeNet Luna HSM Client allows you to use both Luna partitions and Data Protection on Demand's HSM on Demand services. Using a single client workstation, you can back up or migrate your keys between Luna and HSMoD, or combine partitions and services into an HA group.

The standard SafeNet Luna HSM Client configuration file requires some special editing to add an HSMoD service. This procedure will allow you to add an HSMoD service to your existing SafeNet Luna HSM Client.

**NOTE** This feature has software and/or firmware dependencies. See [Version Dependencies by Feature](#) for more information.

### Prerequisites

- > DPoD supports Windows and Linux operating systems only. This procedure presumes that you have already set up SafeNet Luna HSM Client on your Windows or Linux workstation:
  - ["Windows SafeNet Luna HSM Client Installation" on page 50](#)
  - ["Linux SafeNet Luna HSM Client Installation" on page 36](#)

- > You must be using SafeNet Luna HSM Client software version 10.1 or higher (see [Updating the SafeNet Luna HSM Client](#)).
- > HSMoD services are only compatible with password-authenticated SafeNet Luna PCIe HSM partitions. For more information on Luna/DPoD compatibility, refer to [Cloning Keys Between Luna 6, Luna 7, and HSM on Demand](#). You can still use HSMoD and PED-authenticated Luna partitions from the same client workstation, but they cannot clone cryptographic objects between them.
- > You must purchase an HSMoD service from SafeNet Data Protection on Demand:  
<https://safenet.gemalto.com/data-protection-on-demand/>

### To add a DPoD HSM on Demand service to an existing SafeNet Luna HSM Client

1. After purchasing an HSMoD service, refer to the DPoD documentation for instructions on downloading the DPoD client package. Transfer the .zip file to your SafeNet Luna HSM Client workstation using **scp**, **pscp**, or other secure means (see [SCP and PSCP](#)).
2. Extract the .zip file into a directory on your client workstation.
3. Extract or untar the appropriate client package for your operating system. Do not extract to a new subdirectory; place the files in the DPoD client install directory. The other client package can be safely deleted.
  - [Windows] **cvclient-min.zip**
  - [Linux] **cvclient-min.tar**  
**# tar -xvf cvclient-min.tar**
4. Run the provided script to create a new configuration file containing information required by the HSMoD service.
  - [Windows] Right-click **setenv.cmd** and select **Run as Administrator**.
  - [Linux] Source the **setenv** script.  
**# source ./setenv**
5. Copy the following certificates from the DPoD client directory to your existing client certificates directory:
  - [Windows default] **C:\Program Files\Safenet\Lunaclient\cert\**
  - [Linux default] **/usr/safenet/lunaclient/cert/****partition-ca-certificate.pem**  
**partition-certificate.pem**  
**server-certificate.pem**
6. Open the configuration file in the DPoD client directory.
  - [Windows] **crystoki.ini**
  - [Linux] **Chrystoki.conf**
7. Copy the following sections from the DPoD configuration file to the existing version in the SafeNet Luna HSM Client install directory. Edit the entries to use the correct filepath to the certificates you copied in step 5:

```
[XTC]
Enabled=1
PartitionCAPath=<client_cert_directory>\partition-ca-certificate.pem
PartitionCertPath00=<client_cert_directory>\partition-certificate.pem
```

```

TimeoutSec=600

[REST]
ClientConnectIntervalMs=1000
ClientConnectRetryCount=900
ClientEofRetryCount=15
ClientPoolSize=32
ClientTimeoutSec=120
CVAppSpecificData=90vNGg10a8uVBmO8zmEVRA==
RestClient=1
ServerName=na.hsm.dpod.live
ServerPort=443
SSLClientSideVerifyFile=<client_cert_directory>\server-certificate.pem

```

Also copy the following entry from the **Misc** section and edit to use the correct filepath to the **plugins** directory:

```

[Misc]
PluginModuleDir=<client_plugins_directory>

```

- [Windows default] **C:\Program Files\Safenet\Lunaclient\plugins\**
- [Linux default] **/usr/safenet/lunaclient/plugins/**

**NOTE** The above example is taken from a Windows **crystoki.ini** file; for a Linux client platform, the **Chrystoki.conf** file uses the same entries in Linux syntax (**Misc = {** instead of **[Misc]**, etc).

Save the configuration file. If you wish, you can now safely delete the extracted DPoD client directory.

8. Manually reset the **ChrystokiConfigurationPath** environment variable back to the location of the original configuration file.
  - [Windows] In the Control Panel, search for "environment" and select **Edit the system environment variables**. Click **Environment Variables**. In both the list boxes for the current user and system variables, edit **ChrystokiConfigurationPath** to point to the **crystoki.ini** file in the original client install directory.
  - [Linux] Either open a new shell session, or reset the environment variable for the current session to the location of the original **Chrystoki.conf** file:

```
# export ChrystokiConfigurationPath=/etc/
```

9. Launch or relaunch LunaCM to verify that both your Luna partitions and HSMoD service are available.

You can now initialize the HSM on Demand service just as you would a password-authenticated Luna application partition. The cloning domain you set on the HSMoD service must match the partition(s) from which you will migrate keys. Refer to the Data Protection on Demand documentation for instructions and information on the capabilities of your HSMoD service.

- > [Initializing an Application Partition](#)
- > [Initializing the Crypto Officer and Crypto User Roles](#)

Refer to [Cloning Keys Between Luna 6, Luna 7, and HSM on Demand](#) before migrating keys or using the HSMoD service in an HA group. You can migrate keys to your new HSMoD service using direct slot-to-slot cloning, a SafeNet Luna Backup HSM, or by setting up an HA group.

- > [Cloning Objects to Another Application Partition](#)

- > Backup and Restore Using a G5-Based Backup HSM
- > Backup and Restore Using a G7-Based Backup HSM
- > Setting Up an HA Group